

Graphic Viewer for Windows (GV)



TIFF, Q0対応版

Graphic Viewer



Version 0.63

<N"®•û-@

fRf}f"fh

%ooæ'œĒ`Ž®

,æ,, ,é,p□•,`

ŠÖ~A—pĈê

,c,c,dŽd—l



f,u,É,Â,ç,Ä

Æ,Ñ,½Ž□□,ìMS-Windows'í%ž%æ'œfrf...□f□□[,Å,·□BMS-Windows'í
%ž,Å,·,©,ç'â%æ-Ê□E'½□F•\Ž!,í"-R,Å,·,ª□A□"à,ì—L-¼,È
%æ'œCE`Ž®□i,l,`fCE`Ž®□A,l,`j,hCE`Ž®□A,p,SE`Ž®□A,o,h,bCE`Ž®□A,p,O
CE`Ž®,È,Ç□j,É'í%ž,µ,Ä,ç,é,ì,í,f,u,¾,¯,Å,µ,â,æ□B

f,u,ì"Á'¥

Žg—p□ă,ì'□^Ó"

—š—đ,T

,f,u,ì“Á’¥

MS-Windows 3.0/3.1'î%ž,ì%æ'œ•\Ž!fvf[]Of%of€

'½,,ì%æ'œ€`Ž®,É'î%ž

16[]Fff[]f^,ÍpfjEfbfg,đŽg,Á,Ä•\Ž![]i,f,u,¾,¯,ì“Á’¥,Á,·[]B[]j

[]i'[][]F16[]FŠÂ<«,Á,íMS-Windows,ÍEÁ'èfpjEfbfg,Á,·[]B[]j

%æ'œff[]f^,ÌRf[]f“fg[]EfhfLf...f[]f“fgftf@fCf<,đ•\Ž!%Á“\

,È,Ç,ª[]A“Á’¥,Á,·[]B, ,Æ[]A^È%º,ì,æ,æ,È,“,Ü,¯<@“\,ª, ,è,Ü,·[]B

,P[]DfNfŠfbfvf{[]fh,Æ,ÌRfs[][]^fy[]fXfg[]i,c,h,a[]j

,Q[]D,a,l,o€`Ž®,Á,Ìff[]f^,ÌZ[]fu

,R[]D•i[]“%æ'œ,Ìfhf%fbfO[]•fhf[]fbfv,É,æ,éŽ©“®[]^Žè“®~A'±•\Ž!

,S[]D%æ'œff[]f^,ì%E[]^[]%ñ“]•\Ž!

,T[]D•i[]“%æ'œff[]f^,ìŽ©“®[]^Žè“®~A€<•\Ž!

,U[]DfEfBf“fhfEfTfCfYŽ©“®•İ[]X<@“\

,V[]DfRf[]f“fg•\Ž!

,W[]DfhfLf...f[]f“fgftf@fCf<•\Ž!

,X[]DfffBfXfvfEfc<@“\•\Ž!

<N“®•û-@

"C^Ó,ìffBfCEfNfgfŠ[] ,ÉGV.EXE[]AGV.HLP,ð%ð“€ ,μ[]Afvf[]fOf
%of€f}f[]fWff[] ,É“o~^CEã[]AŽÀ[]s,μ,Ä
%oº,³,ç[]BŠÖ~A•t,¯,ð[]s,!,îftf@fCf<f}f[]fWff[] ,È,Ç,©,ç
%oæ’œftf@fCf<,ðf_fuf<fNfŠfbfN,·,é,±
,Æ,Å<N“® ,Å,«,Ü,·[]B,Ü,½[]Aftf@fCf<f}f[]fWff[] ,©,ç%oæ’œftf@fCf<,ðfhf
%ofbfO[]•fhf[]fbfv,·,é,±,Æ,É,æ,è<N“® ,·,é,±,Æ,à%oÂ“\,Å,·[]B

,f,u,ì,ç,ë,ç
,ë,È[]Ý’è,í<N“®CEã,É•ï[]X“o~^,Å,«,Ü,·,ª[]A<N“®flfvfVf±f“,ð,Â,¯,é,Æ[]A[]Ý’è,ð, ,
ç,©,¶,ßCE^,ß,Ä,©,ç<N“® ,Å,«,Ü,·[]B

<N“®f|fvfVf#f“

GV [<@ŽíŽw'è>] [/FP[+|-]] [/PG=<Pager>] [/EXT=<TYPE>]
[/ZM=<ZoomRate>] [/AS=<AspectRatio>] [/AA[+|-]]
[/WD=<DataDir>]
[/ICON[+|-] [/UC[+|-]] [/QT{-|= {0|1|2}}] [/DT[+|-]] [/VI[+|-]]
[/C={16|256}] [/ESC[+|-]] [/APT={W|H|D}] [/BMP[+|-]] [/AL[+|-]]
[/OD[+|-]] [/PS={1|2|3}] [/DDE]
[<DataFile>]

<@ŽíŽw'è>	<u><@ŽíŽw'èf fvfVf#f“</u>
/FP[+ -]	<u>Ā'èfpfĀfbfgf fvfVf#f“</u>
/PG=<Pager>	<u>fy[]fWff[]Žw'èf fvfVf#f“</u>
/EXT=<TYPE>	<u>f^fCfv[]Ý'èf fvfVf#f“</u>
/ZM=<ZoomRate>	<u>fY[]f€—;Žw'èf fvfVf#f“</u>
/AS=<AspectRatio>	<u>fAfXfyfNfg”äŽw'èf fvfVf#f“</u>
/AA[+ -]	<u>Ž©“®fAfXfyfNfg”ä'²[]®f fvfVf#f“</u>
/WD=<DataDir>	<u>fffBfĀfNfgfŠŽw'èf fvfVf#f“</u>
/ICON[+ -]	<u>fAfCfRf“%»Žw'èf fvfVf#f“</u>
/UC[+ -]	<u>”ňfAfNfefBfuŽŽ[]Ä•`%æf fvfVf#f“</u>
/QT{- = {0 1 2}}	<u>Ā.[]f fvfVf#f“</u>
/DT[+ -]	<u>fffBfUf fvfVf#f“</u>
/VI[+ -]	<u>fZ[]fu•\Ž;fCf[][]fWf fvfVf#f“</u>
/C={16 256}	<u>Ā.[]F[]”f fvfVf#f“</u>
/ESC[+ -]	<u>ESCfL[][%Ÿ%°ŽŽ[]—¹f fvfVf#f“</u>
/APT={W H D}	<u>fAfXfyfNfg”ä'²[]®f.[]f[]fh[]Ý'èf fvfVf#f“</u>
/BMP[+ -]	<u>frfbfgf}fbfv—~—pf fvfVf#f“</u>
/AL[+ -]	<u>Ž©“®~AĀ<•\Ž;f fvfVf#f“</u>
/OD[+ -]	<u>fhfLf...f[]f“fg•\Ž;f fvfVf#f“</u>
/PS={1 2 3}	<u>PhotoCDftfH[]f}fbfg•\Ž;fTfCfyf fvfVf#f“</u>
/DDE	<u>.c.c,df fvfVf#f“</u>

<@ŽíŽw'èlfvfVf#f">

<<@ŽíŽw'è>F{ /98 | /98N | /98E | /98E1 | /98EA | /GA | /VGA }
/98,/98N PC9801(16F)+NEC
WIN3.0/3.0A/3.1,EPSON WIN3.1
/98E,/98E1 PC9801(16F)+EPSON
WIN3.1(/98N,ÅF,ª,¨,©,µ,¢ê#)
/98EA PC9801+EPSON WIN3.0A
/GA PC9801+GA1024i/
W(Ā'èfpfĀfbfg"Å)
/VGA VGA
Default Ā<L^ÈŠO,ìfpfĀfbfgf}fì[fWff[Ā'
%oŽ<@Ží

Ā'èfpfĀfbfglfvfVf#f">

/FP[+|-]
,f,u,ìÝ'è,µ,½,o,b,X,W,ìfpfĀfbfg,đ'¼,ìAfvfŠfP[fVf#f",ªfAfNfefBfu,É,È,Á,Ä,
à∅,è'Ö,ì,È,,È,è,Ü,·B

fy [fWff [Žw'èlfvfVf:f“

/PG=<Pager>

%æ'æftf@fCf<,lfhfLf...

f“fgftf@fCf<,đ“Ç,p,½,ß,lfy [fWff [,đŽw'è,μ,Û,·BfpfX,³Ê,Á,Ä,ç
,È,¯,ê,îftf<fpfX,Å,Å<Lq,μ,Ä%º,³,çBffftfHf<fg,Ínotepad.exe,Å,·B

f^fCfv□Y'èfIfvfVf#f“

/EXT=<TYPE>

□F{ MAG | MKI | Q4 | JPG | GIF | PIC | PI | TIFF | PCD | Q0 | XBM | X |
BMP | ALL }

MAG ,Ü,«,¿,á,ñNET,ÌMAKI02Ì«°İ-Ä(,l,`,fCE`Ž®)
MKI(MAKI ,Ü,«,¿,á,ñNET,ÌMAKI01A□AMAKI01BÌ«°İ-Ä(,l,`,j,hCE`Ž®)
)
Q4 QLDÌ«°xÑ,ÅŠJ” ,³,ê,½Ì«°İ-Ä(,p,SCE`Ž®)
JPG(JPEG) JFIFÌ§²ÙÌ«°İ-Ä,ÌJPEGÌ«°İ-Ä(,i,o,d,fCE`Ž®)
GIF CompuServe,ÅŠJ” ,³,ê,½Ì«°İ-Ä(,f,h,eCE`Ž®)
PIC -ö’ò,³,ñ,ÌŠJ” ,³,ê,½,w,U,W,j—p,Ì«°İ-Ä□i,o,h,bCE`Ž®□j
PI -ö’ò,³,ñ,ÌŠJ” ,³,ê,½16/256□F—p,Ì«°İ-Ä□i,o,%oCE`Ž®□j
TIFF TIFF(Tagged Image File Format) □i,s,h,e,eCE`Ž®□j
PCD KodaKŽĐ,ªŠJ” ,µ,½Photo-CDÌ«°İ-Ä□i,o,b,cCE`Ž®□j
Q0 QLDÌ«°xÑ,ÅŽg,í,ê,Ä,ç,éRGBÍpÀ,Ì«°İ-Ä□i,p,OCE`Ž®□j
XBM X Window,ÌËp-Äİ-ÌßÌ«°İ-Ä(,w,a,lCE`Ž®)
X JUNET,Å,ÌXBM,ð%ü—Ç,µ,½Ì«°İ-Ä(,wCE`Ž®)
BMP MS-Windows,Å,ÌËp-Äİ-ÌßÌ«°İ-Ä(,a,l,oCE`Ž®)

ALL □ã<L,ÌftfH□[f}fbfg,ðŠg’£Žq,É,æ,Á,ÄŽ©“®”»•Ê,·,éf,□[fh

fY□[f€—;Žw’èfIfvfVf#f“

/ZM=<ZoomRate>

%oæ’œff□[f^,Ì•Ž;Žž,ÌfY□[f€—; ,ðŽw’è,µ,Ü,·□B□i,P,O□“□` ,X,X,X□“□j

fAfXfyfNfg"äŽw'èlfvfVf†f“

/AS=<AspectRatio>

%œ'œff[f^,ì•\Ž|Žž,lfAfXfyfNfg"ä,đŽw'è,μ,Ü,·B[i,T,O`,Q,T,Oj

Ž©“®fAfXfyfNfg”ä’²®flfvfVf‡f“

,o,h,bCE`Ž®ff[]f^•\Ž|Žž[]Aff[]f^f^fCfv,đ,Ý,é,±
,Æ,É,æ,èfAfXfyfNfg”ä,đŽ©“®’²®®,μ,Ä•\Ž|,μ,Ü,·[]B

fffBfCEfNfgfŠŽw'èlfvfVf†f“

/WD=<DataDir>

<N“®Žž,ì%œ'œff□[f^,ìfffBfCEfNfgfŠ,đŽw'è,μ,Û,:□B

fAfCfRf“%o»Žw'èlfvfVf‡f“

/ICON[+|-]

<N“®Žž,ÉfAfCfRf“%o»,μ,Ä<N“®,;é,Æ,«Žw'è,μ,Ü,·□B,à,¿,ë,ñ'¼,ĭfAfvfŠfP□[f
Vf‡f“,Æ“˘,ŕ,æ,ɹ,É SHIFT +
f_fuf<fNfŠfbfN,Å<N“®,μ,½,Æ,«,àfAfCfRf“%o»,³,ê,Ü,·□B

”ňfAfNfefBfuŽžÄ•`%œfIfvfVf#f“

/UC[+|-]

,f,u,řfAfNfefBfu,Å,È,,È,Á,Ä,ç,é,Æ,«,à□A,Å,«,éÇÈ,è'%ŽÀ,È□F,Å•\
Ž!,μ,Ü,·□B'¼,lfAfvfŠfP□[fVf#f“ ,É,æ,Á,Ä□AfpfÇfbfg,ª•ï□X,³,ê,½,Æ,«,É%œ-
Ê,ì□F,đ'²□®,·,é,ì,Å□A•\Ž!,ª'x,,È,è,Ü,·□B

CE, □FfifvfVf#f“

/QT{-|= {0|1|2}}

%æ'æff□[f^•\Ž|Žž,ìCE, □FfifvfVf#f“, ðŽw'è,μ,Ü,·□B-Žw'è,ì,Æ,«,íCE, □F-
³,μ□A0,ì,Æ,«,ífffBfXfvfCEfC,ì•\Ž!□F□“,ª32K^È□ã,ì,Æ,«,íCE, □F-³,μ,Å□A,»,ê^È
%º,ì□F□“,ì,Æ,«,ífffBfXfvfCEfCfhf%ofCfo,ì“\—í,É, ,í,¹,ÄCE, □F,·,é□A1,í1fpfX□A2,í
2fpfX,ìCE, □F,ðŽw'è,μ,Ü,·□B1fpfX,ì•û,ª•\Ž!,í'½□□,‘¬,Å,·,ª□A□F,ì□ÄCE»□«,í^«,-
,È,è,Ü,·□B,Ü,½□A“-‘R,ìŽ-,È,ª,ç□ACE, □F,ð,μ,È,çŽw'è,É,·,é,ÆfnfCfjf%o□[□A
ftf<fjf%o□[,ì•\Ž!%oÂ“\f}fVf“,Å,í□,‘¬,É•\Ž!,³,ê,Ü,·□B

fffBfUfIfvfVf#f“

/DT[+|-]

fffBfU,đ□s,α,©,Ç,α,©,đŽw'è,μ,Û,·□B

fZ[fu•\Ž!fCf[fWf!fvfVf#f“

/VI[+|-]

ff[f^,đfZ[fu,·,é,Æ,«Æ»Ý,ì•\Ž!ó'ÔifY[f€AfXfyfNfg”äj,ì,Ü,Üs,ꝛ
,©,Ç,ꝛ,©,đÝ'è,μ,Ü,·B

CE, F "fifvfVf#f"

/C = {16|256}

CE, F Žw'èŽž, ÉCE, F, ·, éF", Å, ·BŽw'è, μ, ½F", æ, è, à
%œ'œff[f^, ìF", ì•û, ð, È, çê#f, íACE, F, ís, í, ê, Ü, ÿ, ñB

ESCfL[][%oY%o°Žž[]I—¹fifvfVf‡f“

/ESC[+|-]

ESCfL[],đ%oY,·,Æ,f,u,ª[]I—¹,·,é,æ,ɣ,É,È,è,Ü,·[]B,½,¾,μ[]A
%oæ'œ,đf[][]fh'†,É,Í[]I—¹,μ,È,ç,æ,ɣ,É,μ,Ä,,¾,³,ç[]B

fAfXfyfNfg"ä'²®f,[]fh[]Ý'èlfvfVf†f“

/APT = {W|H||D}

fAfXfyfNfg"ä,ð'²® , , éf, []fh, ð^È%ºº, ì, æ, x, É[]Ý'è, µ, Ü, ·[]B
, v[]F·\Ž!·[], ð'²®, µ, ÄfAfXfyfNfg"ä, É, , í, ¹, é
, g[]F·\Ž![], , ³, ð'²®, µ, ÄfAfXfyfNfg"ä, É, , í, ¹, é
, h[]FfIfŠfWfif<, æ, èŠg'å, ³, ê, é·û€ü, É'²®, µ, ÄfAfXfyfNfg"ä, ð, , í, ¹, é
, c[]FfIfŠfWfif<, æ, è[]k[]¬, ³, ê, é, æ, x, É'²®, µ, ÄfAfXfyfNfg"ä, ð, , í, ¹, é

frfbfgf}fbfv~—pfIfvfVf#f“

/BMP[+|-]

,f,u,ì“à•”,Å•`%oæ□iff□[f^•\Ž!□AfXfNf□□[f<,È,Ç□j,ì‘¬,çftfH□[f}fbfg,ì—~—p,ì
—L-³,đ□Ý’è,μ,Û,·□B,±,ìftfH□[f}fbfg,đ—~—p,μ,È,ç,æ,α,É,·,é,Æ□A□Á”if□f,fŠ—
Ê,đ—},!,é,±,Æ,º□o—^,Û,·□B

Ž © “ ® ~ ACE < • \ Ž ! f l f v f v f f f “

/AL[+|-]

ftf@fCf<,đ“Ç,Ý□ž,P,Æ,«□Aftf@fCf<-
¼,ì□ĀCEã,ì,P•ŕŽš,Ü,½,Í,Q•ŕŽš,đCE©,Ä□A^È%º,ì<K'¥,É, ,xřff□[f^ftf@fCf<,ª“~
ŕřffBfCEfNfgfŠ,É'ŕ□Ý,·,é,Æ,«□AŽ © “ ® “I,É,·,x,Ä,ìftf@fCf<,đ“Ç,Ý□ž,ň,Ā~ACE<,μ,
Ā•\Ž!,·,é<@“\,đ□Ý'è,μ,Ü,·□B

ftf@fCf<-¼,ì<K'¥□@

□ã%º xxxxU.ext + xxxxD.ext ,Ü,½,Í xxxxU.ext + xxxxS.ext
□ã'+%º xxxxU.ext + xxxxM.ext + xxxxD.ext ,Ü,½,ÍxxxxU.ext
 +□@xxxxM.ext + xxxxS.ext
□ŕ%ºE xxxxL.ext + xxxxR.ext
□ŕ'+%ºE xxxxL.ext + xxxxM.ext + xxxxR.ext
,Q,~ ,Q xxxxUL.ext + xxxxUR.ext + xxxxDL.ext + xxxxDR.ext
 ,Ü,½,Í xxxxUL.ext + xxxxUR.ext + xxxxSL.ext + xxxxSR.ext

fhfLf...f□f“fg•\Ž!flfvfVf#f“

/DC[+|-]

,±,lfifvfVf#f“,³□Ý’è,³,ê,é,Æ□A%œ’œ•\Ž!,Æ“~Žž,ÉfhfLf...f□f“fgftf@fCf<,đ•\Ž!,μ,Ü,·□B

fhfLf...f□f“fg,đ•\Ž!,·,é•û-@,Æ,μ,Ä□A%Ef{f^f“,lf_fuf<fNfŠfbfN,Å,à%œÂ”\ ,Å,·□B

PhotoCDftfH[f]fbfg•\Ž;fTfCfYfifvfVf#f“

/PS={1|2|3}

PhotoCDftfH[f]fbfg,ìff[f^,đ•\Ž|,·,é,Æ,«,ìfTfCfY,đŽw'è,μ,Û,·B

1 : 192 x 128

2 : 384 x 256

3 : 768 x 512

,c,c,dflfvfVf:fj“

,c,c,d,đŽg—p,·,é,Æ,«,ÉŽw'è,μ,Ü,:□B

fRf}f“fh



ftf@fCf<f f f f... []

•Ö f f W f f f f... []

•\Ž f f f f... []

f l f v f V f f f “ f f f f... []

f w f < f v f f f f... []

f L [f { [f h ‘ € [] , É , Â , ç , Ä

f } f E f X ‘ € [] , É , Â , ç , Ä

, v , % o o , Ž , , , , [] , — , “ , } f C f “ f ^ [] f t f F f C f X , É , Â , ç , Ä

,v,%o,Ž,,,□,–,“,ìfCf“f^□[ftfFfCfX,É,Â,ç,Ä

Windows ,ìf□fjf...□[,ì□€-Ú,É,í^è'è,ì□],x,x,«fXf^fCf<,ª, ,è,Ü,·□B—
á,¡,îftf@fCf<,đ“Ç,Ý□ž,þ,Æ,«,ìf□fjf...□[,í□uftf@fCf<□{Š},□v,ì,æ,x,É,Å,·□B
%opCEêCE—,Å,ÍŽñ”ö^êšÑ,μ,Ä,ç,é,±,ì<K'¥,í□AŽc”O,È,ª,ç“ú- {CEêCE—
,Å,ífo□[fWf#f“ ,ª•í,í,é“x,ÉfRf□fRf□•í,í,Á,Ä,ç,Ü,·□B—
á,¡,î□u•Ò□W□{fRfs□[□v,ífo□[fWf#f“,Q,©,çfo□[fWf#f“,R,Ö^Ú□s,·,é,É, ,½,è□u•Ò
□W□{·;ŽÊ□v,É•í,í,è,Ü,μ,½,ª□Afo□[fWf#f“,R□D,P,Å,í,Ü,½□u•Ò□W□{fRfs□[□v,É
-ß,Á,Ä,μ,Ü,ç,Ü,μ,½□B,f,u,Å,í<@”\,ì- {Žž,É,í,©,©,í,è,ì,È,ç,ÆCE¾,±
,Æ,Å,» ,ìü□V,í'x,ê,¬,Ý,Å,·,ª□Afwf<fvftf@fCf<,Å,í•W□€,ìf□fjf...□[-¼,à•¹<L,·,é,±
,Æ,Å'¼,ìfAfvfšfP□[fvf#f“ft□[fU□[,ì□,½,ž,ì•Ö<X,đ,í,©,è,½,ç,ÆŽv,ç,Ü,·□B

□|ŽQ□|•¶CE£□@,v,h,m,c,n,v,rfAfvfšfP□[fvf#f“fXf^fCf<fKfCfh

klávesnice

,f,u,Å,í,A^ê"Ê,WindowsfAfvfŠfP[fVf#f",ì,æ,ɹ,Éf[fjf...
[,ǫfL[f{[fh,©,ç'ı'ǫ,é'¼,ÉA^È%º,ì,æ,ɹ
,ÈŠô,Â,©,ìfRf}f"fh,ǫfL['€ì,ÅŽÀs[]o—^,Ü,·[]B

fj[f<fL[•\Ž!ff[f^,ìfXfNf[]f<
fj[f<fL[[]{SHIFTfL[•\Ž!ff[f^,ì, '¬fXfNf[]f<
ROLLUP/ROLLDOWN(PREV/NEXT)fL[•\Ž!ff[f^,ìǎ%º, '¬fXfNf[]f<
fej"fl[,ì+'[]^'-'	•\Ž!Šg'ǎ— ,ìfAfbfv[]^f_fEf"
fej"fl[,ì*'	'S%ºæ-Ê•\Ž!
fej"fl[,ì/'	fTfCfYŽ©"®'²[]®
fŠf^[]f"fl[[]^fXfy[]fXfL[ŽŸ,ìff[f^,ì•\Ž!
fŠf^[]f"fl[[]^fXfy[]fXfL[[]{SHIFTfL['O,ìff[f^,ì•\Ž!

f}fEfX'€ì

,f,u,ìff□[f^•\Ž!%œ-Ê,É^È%°ò,ì,æ,α,Èf}fEfX'€ì,ð,·,é,±
,Æ,É,æ,Á,ÄfRf}f“fh,ðŽÀ□s□o—^,Ü,·□B

□¶f{f^f“,ð%Ÿ,μ,½,Ü,Ü'Ò,Â
ŽŸ,ìff□[f^□^'O,ìff□[f^•\Ž!“™,ìf□fjf...□[,ð•\Ž!
%œEf{f^f“,ð%Ÿ,μ,½,Ü,Ü'Ò,Â
•\Ž!Šg'å—!,ìf□fjf...□[,ð•\Ž!
□¶f{f^f“,ðf_fuf<fNfŠfbfN
ŽŸ,ìff□[f^,ð•\Ž!
%œEf{f^f“,ðf_fuf<fNfŠfbfN
•\Ž!ìff□[f^,ìfhfLf...f□f“fgftf@fCf<,ð•\Ž!

[ftf@fCf<f□fjf...□I](#)

ftf@fCf<□{“C,Ý□ž,Ý

ftf@fCf<□{□V<K•Ů‘¶

ftf@fCf<□{ŠÂ<<•Ů‘¶

ftf@fCf<□{□I—¹

fRf}}f“fh

ftf@fCf<{“Ç.Ýž.Ý(ftf@fCf<{ŠJ.)

f_fCfAf□fOf{fbfNfX,ª•\Ž!,³,ê,Ü,·,ì,Å□A%œ'œĚ`Ž®(File Type)
,đŽw'èĚã□AĚ©,½,¢%œ'œ,ì, ,éffBfĚfNfgfŠ□[,É^Ú“®□A-Ú“l,ì
%œ'œftf@fCf<,đf_fuf<fNfŠfbfN,·,é,©□A'l'đĚãOpen,đfNfŠfbfN,μ,Ä
%œª,³,¢□B

- Auto Link Ž©“®~AĚ<•\Ž!flfvfVf#f“
- Open Document fhfLf...f□f“fg•\Ž!flfvfVf#f“

ftf@fCf<f□fjf...□l

ftf@fCf<□{□V<K•Ů‘¶(ftf@fCf<□{-¼‘O,đ•t,-,Ä•Ů‘¶)

•\Ž!,μ,Ä,ϕ,é

%oæ'œ,đ,a,l,oE`Ž®,Å•Ů‘¶,μ,Û,·□BOptions,đfNfŠfbfN,·,ê,î□AfZ□[fuŽž,ì□
î•ň□Ý'è,ª,Å,«,Û,·□B□iflfvf#f“□{•Ů‘¶ŠÂ<<□j

ftf@fCf<f□fjif...□l

ftf@fCf<□{ŠÂ<<•Ů'¶

%oæ'œCE`Ž® ,â<N“® flfvfVf#f“ ,ìÝ'è,ð□%oŠú

%o»ftf@fCf<□iGV.INI□j,É□',«□ž,Ý□AŽŸ

%oň<N“® Žž,í•ï□X,μ,½□Ý'è,Å<N“® ,μ,Ü,·□B

ftf@fCf<f□fjf...□l

ftf@fCf<□{□I—¹(ftf@fCf<□{,f,u,ì□I—¹)

,f,u,đ□I—¹,μ,Û,·□B,±,ì,Æ,«□AfhfLf...f□f“fg,đ•\Ž!,μ,Ä,φ
,½,Æ,«,í,»,)fvf□fZfX,à□I—¹,³,¹,Û,·□B

ftf@fCf<f□fif...□I

•Ò□Wf□fjf...□I

- Ò□W□{•jŽÊ
- Ò□W□{•\Ž!fCf□□[fW•jŽÊ
- Ò□W□{Žæ,è□ž,Ý
- Ò□W□{•\Ž!fNfŠfA
- Ò□W□{CE,□F
- Ò□W□{%oň“]
- Ò□W□{%oæ'œ~ACE<

fRf}f“fh

•ÒW{•;ŽÊ(•ÒW{fRfs[])

•\Ž!fCf[]fW,đfNfŠfbfvf{[]fh,ÖfRfs[],μ,Ü,·B

•ÒWf[]fj...[]

•ÒW{•Ž!fCf[]fW•;ŽÊ(•ÒW{‰œ'œfRfs[]}

CE»Ý•\Ž!,μ,Ä,ç,éCf[]fW,ì,Û,ÛfNfŠfbvf{[]fh,ÖfRfs[],μ,Û,·B

•ÒWf[]fj...[]

•Ò□W□{Žæ,è□ž,Ý(•Ò□W□{“\,è•t,¬)

fNfŠfbfvf{□[fh,©,ç%œ‘œ,đ,f,u,Öfy□[fXfg,μ,Ü,·□B

•Ò□Wf□fj...□[

•ÒW{•Ž!fNfŠfA(•ÒW{Á<Ž)

Œ»Ý•\Ž!,³,ê,Ä,ç,é%œ'œ,ðÁ<Ž,μ,Û,·B

•ÒWfífj...I

•ÒW{CE,F

Žw'è,³,ê,½F",É•Ž!,μ,Ä,φ,éff[f^,đCE,F,μ,Ü,:B

•ÒWfjif...I

•ÒW{‰ñ“]

‰æ‘œ,ì¶¶^‰E‰ñ“]•\Ž,đ,μ,Û,·B

•ÒWf¶fj...¶[

•ÒW{‰æ'œ~ACE<

•\Ž!,³,ê,Ä,ç,é

‰æ'œ,ìŽw'è,³,ê,^{1/2}•ûœü,ÉA^{1/2}V,Éff[f^,ð“Ç,Ýž,ÝA~ACE<•\Ž!,μ,Û,·B

•ÒWf^{1/2}fif...[]

•\Ž!f□fjf...□I

•\Ž!□{‘S%oæ-Ê•\Ž!

•\Ž!□{fTfCfYŽ©“®’²□®

•\Ž!□{Šg’â•\Ž!

•\Ž!□{‰oæ’œ□î•ñ

•\Ž!□{fhfLf...f□f“fg

•\Ž!□{fffBfXfvfœfC□î•ñ

fRf}f“fh

•\Ž![]{'S%œ-Ê•\Ž!

'S%œ-Ê•\Ž!,μ,Û,·[]BfL[],đ%Ÿ,·,©[]Af}}fEfXfNfŠfbfN,ÅCE³,É-ß,è,Û,·[]B

•\Ž!f[]fj...[]

•\Ž!{ftfcfYŽ©“®’²®

Œ»Ÿ,î^Ê’u,ÅACE»Ÿ,ì•\Ž!ff[f^,đ,Å,«,é,¾,´’â,«,•\Ž!,Å,«,é,æ,α
,ÉfEfCf“fhfE,ìTfCfY,đ•ïX,μ,Û,·B

•\Ž!föfif...[]

•\Ž!□{Šg'â•\Ž!

Žw'è,³,ê,^{1/2}Šg'â—!,Åff□[f^,đ•\Ž!,μ,Ü,·□BŽÀ□Ů,É,íflfvfVf#f“□{Šg'â—
↓,Å□Ý'è,³,ê,^{1/2}Šg'â—!,Æ□A,±,ìf□fjf...□[,ÅŽw'è,³,ê,^{1/2}Šg'â—!,đŠ|
,□#,í,¹,^{1/2}”{—!,Å•\Ž!,³,ê,Ü,·□B,Ü,^{1/2}□A,±,±,ÅŽw'è,μ,^{1/2}Šg'â—
!,í□ACE»□Ý,ìff□[f^,ì•\Ž!,ì,Ý,É”^{1/2}%of,³,ê,Ü,·□B

•\Ž!f□fif...□[

•\Ž!;{‰œ'œî•ñ

•\Ž!,μ,Ä,ç,éff[f^,ìî•ñ,đ•\Ž!,μ,Û,·B•\Ž!,³,ê,éî•ñ,í‰œ'œ,ìŽí—
p,É,æ,Á,Ä^Ù,È,è,Û,·,ªAŠî-{"I,É,ÍTfCfYAff[f^,É,Â,ç,Ä,ç
,éfRf"fg,È,Ç,Å,·B

•\Ž!;fif...[]

•\Ž!{fhfLf...f“fg

%œ'œftf@fCf<,ÉfhfLf...f“fgftf@fCf<,ª•t'® ,μ,Ä,φ,ê,î,» ,ê,đ•\
Ž!,μ,Ü,·Bf}fEfX,ì%œEf{f^f“ ,ìf_fuf<fNfŠfbfN,Å,à%œÂ”\,Å,·B

•\Ž!f“fif...[]

•\Ž!{fffBfXfvfCfCî•ñ

fffBfXfvfCfCfhf%ofCfo,ì<@”\,đŽ!,μ,Û,·B

•\Ž!fñfif...L

f!fvfVf#f“f[]fj...[]



f!fvfVf#f“[]{—~—pŠÂ<<



f!fvfVf#f“[]{Šg'â—!



f!fvfVf#f“[]{CE,[]E



f!fvfVf#f“[]{fAfXfyfNfg”ä



f!fvfVf#f“[]{•\Ž!ff[]f^



f!fvfVf#f“[]{•Û'¶ŠÂ<<



f!fvfVf#f“[]{ftfHfgCD[]Ý'è

fRf}f“fh

lfvfVf#f" { - ~ - pŠÂ<<

Machine

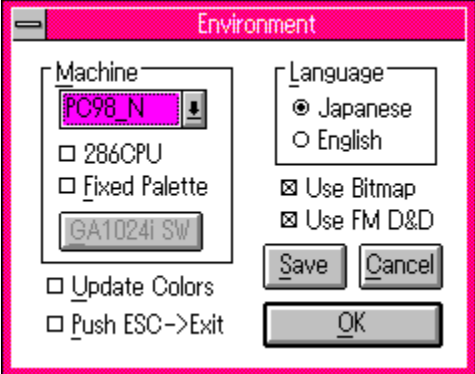
^È%º,ì<@Ží,ª'í'ð,Å,«,Ü,·B
PC98_N PC9801(16F)+NEC
WIN3.0/3.0A/3.1,EPSON WIN3.1
PC98_E31 PC9801(16F)+EPSON
WIN3.1(/98N,ÅF,ª,¨,©,µ,¢ê#)
PC98_E3A PC9801+EPSON WIN3.0A
GA1024i PC9801+GA1024i(Ā'èfpfĀfbfg"Ā)
VGA_16 VGA
OTHERS Ā<L^ÈŠO,ìfpfĀfbfgf}f[]fWff[]'í%ž<@Ží
[] 286CPU 286<@Ží,ĀŽw'è,µ,Ā%º,³,¢
[] Fixed Palette Ā'èfpfĀfbfgf lfvfVf#f"
GA1024i SW <@Ží,ðGA1024i,É,µ,½,Ā,«[]Ý'è"Ô[]†,ðŽw'è,µ,Ü,·

Language

•\Ží,·,é,Ā,«,ÉŽg—p,·,éĀ¾Āê,ðŽw'è,µ,Ü,·

[] UpdateColor "ñfAfNfefBfuŽž[]Ā•`%ºælfvfVf#f"
[] Push ESC->Exit ESCfL[][%ºŸ%ºŽž[]l—¹lfvfVf#f"
[] Use Bitmap f[]fbfgf}fbfv—~—p[]lfvfVf#f"
[] Use FM D&D ftf@fCf<f}f[]fWff"ĀŽ©,ìhf%ºfbfO[]•fhf[]fbfv,ì—
~—p,ì—L-³,ð[]Ý'è,µ,Ü,·BWindowsNT,Ā—~—
p,·,é,Ā,«,É,í[]A,±,ìlfvfVf#f",ðOFF,É,µ,Ā
%º,³,¢[]B

lfvfVf#f" f[]jf...[]



flvfVf#f“□{Šg’â—!

•\Ž!ff□[f^,đŽw’è,μ,½”{—!,Å•\Ž!,μ,Ü,·□BfY□[f€—
!,đŽw’è,·,éf_fCfAf□fOf{fbfNfX,ª•\
Ž!,³,ê,Ü,·□BŽw’è,Å,«,é”í^í,í10,©,ç999,Ü,Å,Å,·□B



Quantization Options

Quantization ON/OFF/AUTO

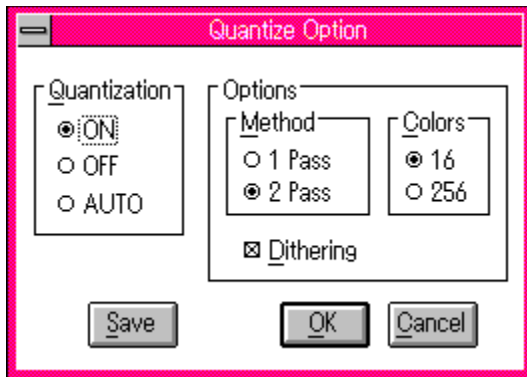
Options

Methods 1pass/2pass 1 Pass/2 Pass

Colors 16/256 16/256

Dithering Dithering

Quantization Options



fifvfVf#f" fAfXfyfNfg"ä

Aspect Ratio fAfXfyfNfg"äŽw'èlfvfVf#f"

Auto Adjust to CG •\

Ž!ff[f^,É#f,í,1,ÄfAfXfyfNfg"ä,đŽ©"®'2®,,éi, o,h,bCE`Ž®,ì,Ýj

Method

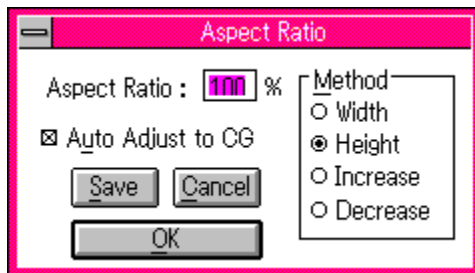
Width •\Ž!•f,đ'2® ,μ,ÄfAfXfyfNfg"ä,É, ,í,1,é

Height •\Ž!f,,3,đ'2® ,μ,ÄfAfXfyfNfg"ä,É, ,í,1,é

Increase flfŠfWfif<,æ,èŠg'â,3,é,é•ûCEü,É'2® ,μ,ÄfAfXfyfNfg"ä,đ, ,í,1,é

Decrease flfŠfWfif<,æ,èk[-,3,é,é,æ,α,É'2® ,μ,ÄfAfXfyfNfg"ä,đ, ,í,1,é

fifvfVf#f" f fjf... f



flfvfVf#f“f{•\Ž!ff[f^

Open Options

Directory ff[f^ftf@fCf<,l'¶fY,·,éfffBfCEfNfgfŠ,lfY'è

Format “Ç,Ýfž,P%œ'œCE`Ž®,lfY'è

Auto Link Data Ž©“®~ACE<•\Ž!flfvfVf#f“

Open Docfile fhfLf...f“fg•\Ž!flfvfVf#f“

Add Datafile List fhf

%fbfO•fhffbfv,μ,½V,μ,çff[f^,ðff[f^f
ŠfXfg,É%Á,!,é,Æ,«,ÉAff[f^fŠfXfg,ÉŠù,É,
,éff[f^,ðŽc,·,©AfNfŠfA,·,é,©,lfY'è

View Options

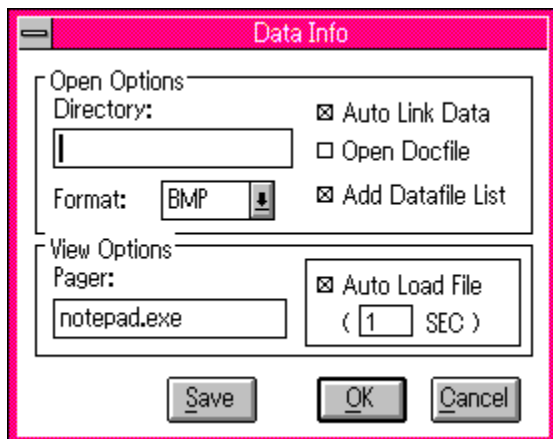
Pager fhfLf...f“fgftf@fCf<,ð“Ç,P,½,ß,lfyf[fWff[l,lfY'è

Auto Load File •i“%œ'œ~A'±•\Ž|Žž,ÉŽ©“®•\

Ž|,·,éiŽ©“®•\Ž|,·,éê#Af|

[fYŽžŠÔ,ðY'è,·,éj

flfvfVf#f“ffjf...f



fifvfVf#f“□{•Ů‘ŕŠÂ<<

View Image

%œ’œfZ□[fuŽž,É•\

Ž!fCf□□[fW,ÅfZ□[fu,·,é,©,Ç,æ

,©,ìŸ’è,Å□ACE,□FÆã,ì□F□”,Å□A•\

Ž!’t,ìŠg’â—

!□AfifvfVf#f“□{fAfXfyfNfg”ä,ì’l,ª”½%of,³,ê,é

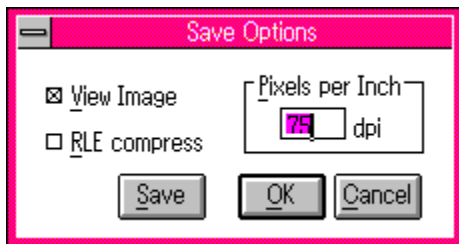
RLE compress

RLE^³□k,ð,µ,ÄfZ□[fu,·,é□Ÿ’è

Pixels per Inch

fZ□[fu,·,éftf@fCf<,ÉŽw’è,³,ê,½

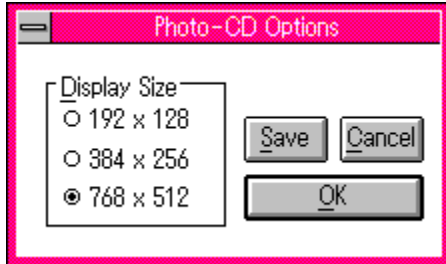
%ð’œ“x,ð□’,<□ž,þ



ftfHfgCD

ftfHfgCD,ì•\Ž!fTfCfY,đŽw'è,·,é

ftfHfgCD



fwf<fvf fjf...l



fwf<fv {ø^ø

fwf<fv {fRf}f"fh

fwf<fv {fwf<fv, iZg, ç•û

fwf<fv {fo [fWf+f"i•ñ

fRf}f"fh

fwf<fv□{□õ^ø

.f,ufwf<fv,ì-ÚŽŸ,ð<N“® ,μ,Ü,·

fwf<fvf□fjf...□[

fwf<fv□{fRf}f“fh

.f,ufwf<fv,lfRf}f“fh^ê——,đ<N“® ,μ,Ü,·

fwf<fvf□fjf...□[

fwf<fv □ {fwf<fv, ðŽg, ç • û

fwf<fv, ðŽg, ç • û, ðfwf<fv, ð • \Ž!, µ, Ü, ·

fwf<fv □ fjf... □ [

fwf<fv□{fo□[fWf#f“□î•ñ

.f,u,É,Â,ç,Ä,ì'~`ì`CE □î•ñ“™,ð•\Ž!,μ,Ü,·□B

fwf<fvf□jf...□[

[fhfLf...f f“fgftf@fCf<](#)

%oæ'œftf@fCf<,ià-¾,ª“ü,Á,½ftf@fCf<,i,±,ÆB
%oæ'œftf@fCf<,Æ“~,¶ffBfÆfNfgfŠ,É“~,¶ftf@fCf<-
¼,ÅŠg'£Žq,ªDOC,Q4D,TXT,ìftf@fCf<,ª¶Y,·,é,Æ,«,íŽw'è,μ,½fy¶fWff¶L,ÅfhfL
f...f f“fg,đ•\Ž!,μ,Ü,·B

Žg—pã,ì'ò“

- 1) f, u, É, Â, ç, Ä, Í, Æ, Ñ, ½, ð, A, Ü, ½, f, u, ðfwf<fvftf@fCf<, É, Â, ç, Ä, Í, AŽRCE`'ãŠw,n,a,³, ñ, A, x, t, h, o, n,³, ñ, A, Æ, Ñ, ½, ð'~ìCE , ð—L, µ, Ä, ç, Ü, ·, B, Ü, ½, AfAfCfRf“ , É, Â, ç, Ä, Í, pfL,³, ñ, ð'~ìCE , ð—L, µ, Ä, ç, Ü, ·, B
- 2) , ±, ðfvf[]fOf%of€, ð'~ìCE []·ñ[]iCopyright·\Ž![]j, ð' , «Š·, ð, È, ç, Å, ,³/₄,³, ç, B
- 3) , ±, ðfvf[]fOf%of€, ðBBS“™ , Å”Đ·z, ·, é, ±, Æ, ÍŽ©—R, Å, ·, B
 , » , ð, Ü, É, Í, A^È%º, ð, ±, Æ, ð... Žç, µ, Ä, ,³/₄,³, ç, B
 - a) ðfvfŠfwfj<, ð, Ü, Ü, Å”Đ·z, µ, Ä, ,³/₄,³, ç, B
 - b) ”Đ·z, ·, é, Ü, É, Í, A·t'® , ð}ffj...fAf<[]EfhfLf...f[]“fg, ð“Y·t, µ, Ä, - ,³/₄,³, ç, B, Ü, ½, A[]Ä”Đ·z, ·, é, Æ, «, Í, A'~ìŽÒ, É, » , ðŽ|~A—[] , ð%º,³, é, ÆŠð, µ, ç, Å, ·, B
 - c) , ±, ðfvf[]fOf%of€, ð”Đ·z, ·, é, É“—, Á, Ä, à'K, ðŽöŽó,^a , Á, Ä, Í, È, è, Ü,¹, ñ, B' A, µ, AffffBfXfPfbfg'ã, È, Ç, ðŽÀ”i, É, Â, ç, Ä, Í, ±, ðCEÀ, è, Å, Í, , è, Ü,¹, ñ, B
 - d) []x<Æ“l—Ú“l, Å”Đ·z, ·, éŽž, É, Í'~ìŽÒ, É~A—[] , ð%º,³, ç, B, CEÂ·É, É'í%ºž, µ, Ü, ·, B
 - e) “ñŽŸ“][]Ú(Nifty Serve FWINF/FGALAV/FQLD1^ÈŠO, ©, ç, ð“][]Ú) , ðê[]±, Í, A^èŽŸ“][]ÚŽÒ, ð, A[]ã<L“o~^[]æ, ðfo[] [fwf[]f“fAfbfv, É'í%ºž, o—^ , é[]ê[]±, ð, Ý, É, µ, Ä, ,³/₄,³, ç, B
- 4) - {fvf[]fOf%of€, ðŽg—p, ·, é, ±, Æ, É, æ, Á, Ä, <N, «, é'ŠQ“™ , É, Â, ç , Ä, A'~ìŽÒ, Í^è[]Ø[]Ó“C, ð·%º, ç, Ü,¹, ñ, ð, Å, » , ð, ð, È,²—¹[]³, - ,³/₄,³, ç, B, fo[] [fwf[]f“fAfbfv[]AfofO'í%ºž, È, Ç, É'í, ·, é[]Ó“C, à·%º, í, È, ç , à, ð, Æ, µ, Ü, ·, B

-š-đ,Ĳ

V0.63b 1994/05/02

V0.63b 1994/05/09

CTL3D.DLL/CTL3DV2.DLL,ì,Ç,¿,ç,©,ª, ,ê,îŽg,æ<@“\’Ç%Á□B
fpfX-¼,ì’,çftf@fCf<,đ”FŽ~,µ,È,çfofO,đFIX□B
DDE,ìFileOpen/FileOpenEx,ìftf@fCf<-¼,đ””,ÅŠ±,Á,Ä,à”FŽ~,·,é,æ,æ,æ
,É□C□³□B
<N“®fifvfVf±f”,ì□®—□□B
□V,µ,ç%æ’œ,đ•\Ž|,µ,½,Æ,«,ÉfAfNfefBfu,É,È,é,æ,æ,æ,É-ß,µ,½□B%æ’œ
%ñ”]ŽŽ“™,ÉfXfNf□□[f<□%Šú%»»,đ,µ,È,ç,±,Æ,ª, ,éfofO,đFIX□B

V0.63a 1994/04/30

,s,h,e,eCE`Ž®“Ç,Ý□ž,ÝŽž,É,à_lxxxx()CEnŠÖ□”,đŽg,æ,æ,æ,É•ī□X□B
f<□[fgfffBfCefNfgfŠ,ìftf@fCf<,đ”FŽ~,µ,È,çfofO,đFIX□B
ftfCfYŽ©“®’²□®,ìfofO,đFIX□B

V0.63□@1994/04/20

,s,h,e,eCE`Ž®,É’î%ž□B
,p,OCE`Ž®,É’î%ž□B
,q,k,dCE`Ž®,É’î%ž□B
,o,h,bCE`Ž®(0x0f:24Bit),É’î%ž□B
DDEfT□[fo,Æ,µ,Ä,ì<@“\’Ç%Á□B
Šg’£Žq,đRLE/DIB->BMP□ARGB->Q0,É’u,«Š·,|,Ä•\Ž!(Drag&Drop,ì,Ý)□B
fZ□[fuŽž,ìrfbfgf}fbfv,ì%đ’œ“x(dpi),ìŽw’è<@“\,ì’Ç%Á□B
fZ□[fuŽž,ìRLE,É,æ,é^³□k<@“\,ì’Ç%Á□B
f□fjf...□[□\□→,ì•ī□X□B
•\Ž!,ì,Ý,ìŠg’â—|,ì’Ç%Á□B
JPEGf%ofCfuf%ofŠ,đV3->V4,É•ī□X(GrayScale,ìftfj□[fg]□B
JPEG•\Ž!%Á”\ftfH□[f}fbfg,ì’Ç%Á(fRf□f“fg□AMulti Strip)□B
JPEG,ì“ÁŽê,Èff□[f^,ª•\Ž!□o—^,é,æ,æ,æ,É-ß,µ,½(PICT/JPEG)□B
PhotoCD,ì•\Ž!,ÉŽg,Á,Ä,ç,½hpcdtoppm,ìf<□[f`f”,đŽ©’O,ìf<□[f`f”,É’u,«
Š·,|,½□B
f□f,fŠ,ª’«è,È,ç,Æ,«,íUseBitmap,ªON,Å,àBitmap,đŽg,í,,É•\Ž!,·,é<@“\’Ç
%Á□B
ftf@fCf<f}f□[fWff“Á—Lfhf%ofbfO□•fhf□fbfv<@“\,ì—~—p,đ□Ý’è□o—
^,é,æ,æ,æ,É•ī□X□B
f□[f{□[fh,É,æ,éŽÀ□s%Á”\,È<@“\,ì’Ç%Á□B
’S%æ-È•\Ž!,đf□[,ª%Ÿ,³,ê,½,Æ,«,É,à”²,_,é—|,É•ī□X□B
fpfCefbfg,ì^Ù,È,Á,½%æ’œ,ì~ACE<<@“\,ì’Ç%Á□B
CE,□Ff□fjf...□[,ì’Ç%Á□B
fy□[fXfgŽž,ÉBITMAP,ì,Ý/BITMAP+PALETTE,ìff□[f^,É’î%ž□B
fy□[fXfg,µ,Ä,«,½ff□[f^,ìî•ñ,ì•\Ž!<@“\,ì’Ç%Á□B

EPSON Windows3.1f, [fh, ì'Ç%oÁA<y, ÑWindows3.0f, [fh, ì"pŽ~ B
JPEG"Ç, Ýž, ÝŽž, ìfGf%o[[^— (error_exit), ìfofO, ðFIX B
OpenFile, ©, ç_lopen/_lcreatŠÖ", ì—~—p, É•ìX B
GIF, ìì<Æ—ì^æŠm•Û•û-@, ì•ïX B
GIF, ì8Fff [f^, ì"Ç, Ýž, ÝŽž, ìpfÆfbfg", ìÝ'è, ìfofO, ðFIX B
ViewImage, Å•Û'¶, ·, é, Æ, «AZ, "s, ·, é, ±, Æ, ª, , éfofO, ðFIX B
/Wdfìfvfvf#f", ìfofOFIX B
BMP, ì•\ŽìfCf [fW, ª, , é, é, ±, Æ, ª, , éfofO, ðFIX B
%opÆêf, [fh, ÅXBM, ìINFO, ð•\Žì, ·, é, ÆfGf%o[[É, È, éfofO, ðFIX B
%oæ'œ Å•`%oæŽž, É98fpfÆfbfg, ª"½%of, ª, é, È, ç, ±, Æ, ª, , éfofO, ðFIX B
/ZM A/AS, ÅÝ'è, ª, x, Û, , ç, ©, È, çfofO, ðFIX B
ftf@fCf<fZ [fuŽž, É"~^êftf@fCf<, ª, , Á, ½, Æ, «, ì^—, ìfofO, ðFIX B

—š—đ,S

V0.62 1993/10/16

,o,%œ`Ž®,É'î%ž□B
PhotoCDftfH□[f}fbfg□i,o,b,cœ`Ž®□j,É'î%ž□B
Ž©“®~A'±•\Ž|<@“\,l'Ç%œÁ□B
'S%œ-É•\Ž|<@“\,l'Ç%œÁ□B
,o,h,bœ`Ž®,lŠg'£fwfbf_,l^ê•”,É'î%ž□B
ftf@fCf<fŠfXfg,Ö,ì□X□V“o~^f,□[fh,l'Ç%œÁ□B
ftf@fCf<fŠfXfg,l'SfNfŠfAf{f^f“,l'Ç%œÁ□B
ftf@fCf<fZ□[fuŽž,Éf}fEfXfj□[f<,đ•ì□X□B
ftf@fCf<“Ç,Y□ž,YŽž,Éf}fEfXfj□[f<,ì□»Žžœv%œ»□B
ftf@fCf<fZ□[fu“r't,Á□',«□ž,YfGf
%œ□[,l,Æ,«□A□',«□ž,Y,ÉŽ,“s,μ,½ftf@fCf<,đ□í□œ,·,é,æ,α,É•ì□X□B
,l,`fœ`Ž®,lftf%œfOA,lftfCfY,ìœvŽŽ•û-@,đ•ì□X□B
<@“\Šg'£,³,ê,½,à,ì,É,Á,ç,Ä□A^ø□”Žw'è,đ%œÁ“\,É,μ,½□B
V0.61,Á,ç,ê,Ä,μ,Û,Á,½,o,h,bœ`Ž®,l0x00/16bitff□[f^,ª•\Ž|□o—
^,É,çfofO,đFIX□B
ftf@fCf<fŠfXfg,l•ì□X,ªftf@fCf<fŠfXfgf□fj...□[,Ö”½%œf,³,ê,É,çfofO,đFIX□B
ftf@fCf<f}f□[fWff,©,ç•\Ž|'t,ÉDrag&Drop,ª□o—^,½fofO,đFIX□B
Šg'â□^□k□-Žž,ÉfTfCfY,ª,Pfhfbfg^Û,É,é,±,Æ,ª, ,éfofO,đFIX□B
“Ç,Y□ž,Yf_fCfAf□fO,Á□A'l'đ□o—^,éfhf%œfCfu□”,lžæ“¾•û-@,ì□C□³□B
Šg'â—l,ì•ì□XŽž,ÉfXfNf□□[f<^Ê'u,ì,l,Y□o,·fofO,đFIX□B

—š—ǎ,R

V0.61 1993/08/20

•i;[]ftf@fCf<,iDrag&Drop,i~A'±•\Ž!<@"\[]B
Šù•\Ž!ftf@fCf<,i[]Ä•\Ž!<@"\[]B
f[]jf...[][,i"ú-{Œê%»>[]B
Ž©"®~ACE<"Ç,Y[]ž,Y•\Ž!<@"\[]B
%œ'œ•\Ž!ŽžfhfLf...f[]f"fg"~Žž•\Ž!<@"\[]B
•\Ž!fCf[][]fWfZ[][fu[]EfRfs[][<@"\,i'Ç%Á[]B
f}fEfX,i[]f_fuf<fNfŠfbfN,É,æ,éŽŸftf@fCf<•\Ž!<@"\[]B
f}fEfX,i%Ef_fuf<fNfŠfbfN,É,æ,éfhfLf...f[]f"fg"•\Ž!<@"\[]B
.o,h,bCE`Ž®(0x01:88VA/8Bit,0x0f:8Bit),É'î%ž[]B
.o,h,bCE`Ž®,Å8/4Bit,i"~,i•\Ž!,μ,½ff[]f^,àŒ³,Æ"~,¶Bit[]",Å•\Ž!,,é,æ,α
,É[]C[]³[]B
.o,h,bCE`Ž®•\Ž!Žž,É[]F,ª^Ã,©,Á,½•"(0x21:88VA/8Bit)
,ð[]C[]³[]Bftf@fCf<,ð<N"®Žž[]A<y,ÑDrag&Drop,ÅŽw'è,μ,½ftf@fCf<,ª•\
Ž![]o—^,É,ç,à,i,i,Æ,«,i[]^—[],ð•i[]X[]B98flfvfVf#f"Žž[]Af[]jf...
[]['i'ðŽž,ÉfpfŒfbfg,ª•W[]€,É-β,é,æ,α,É•i[]X[]B
ff[]f^,i"Ç,Y[]ž,Y't,i[]—¹[]o—^,É,ç,æ,α,É,μ,½[]B
fTfCfY,i'â,«,É,i,o,d,fCE`Ž®,i•\Ž!Žž,lfnf"fOfAfbfv,ð%ň"ð[]B
fAfXfyfNfg"äŽ©"®'²[]®,ª,o,h,bCE`Ž®^ÈŠO,É%œ<¿,ð—^,!,éfofO,ðFIX[]B
UseBMP,ðŽw'è,μ,È,ç,Æ,«,Éff[]f^,æ,è'â,«,ÈfEfBf"fhfE,É,,:é,Æ•\
Ž!,μ,È,çfofO,ðFIX[]B
fpfŒfbfg",ªffftfHf<fg'l^ÈŠO,i,a,l,oCE`Ž®,i"Ç,Y[]ž,YŽž,lfofO,ðFIX[]B

V0.60a 1993/07/02

.o,h,bCE`Ž®(X68K)4BitftfH[]f}fbfg(0x00),É'î%ž[]B
fAfXfyfNfg"ä,i'²[]®•û-@,i'Ç%Á[]B
[]Èf[]f,fŠf,[]fh,i'Ç%Á[]B
%œ'œ%ň"]Žž,iŽ©"®'²[]®fAfXfyfNfg"ä,i•â[]³[]B
ESCfL[][%Ÿ%žž[]l—¹f[]fvfVf#f",i'Ç%Á[]B
—~—p[]F[]",i[],È,ç%œ'œ,ðŒ,[]F,μ,½,Æ,«,lfofO,ðFIX[]B

—š—đ,Q

V0.60 1993/06/13

CE, □F□^ —□,đ,·, x, Ä, ðftfH□[f}fbfg, ÅTf|□[fg□B
CE, □F-³, μ, ðftf|□[fg□B
, o, h, bCE`Ž®(X68K), ðftf|□[fg□B
MS-Windows3.1, ðCEöŠj" ÅDrag&Drop<@"\, ð'í%ž□B
%œ'œf□□[fh□ó<μ, ð\Ž!·û-@, ð·ï□X□if□ff...□[-> f^fCfgr<□j□B
flfvfVf†f"Žw'è·û-@□AfZ□[fu·û-@, ð·ï□X□B
□%Šú%œ»ftf@fCf<, ðftfH□[f}fbfg, ð^ê·"·ï□X□B
<@"\Šg'£, ³, ê, ½, à, ð, É, Â, †, Ä□A^ø"Žw'è, ð%Â"\, É, μ, ½□B
fpfCEfbfg, ð·ï□X, ðfAfCfRf"Žž, É, í, s, í, È, †, œ, †, É, μ, ½□B
, i, o, d, fCE`Ž®, Å·, ³0, ðfRf□[fg, ðff□[f^, ³·\Ž!□o—^, È, †fofO, ðFIX□B
, i, ` , fCE`Ž®, ð·"·œZ□[fu, ð"»'èŠî€□ACEvŽZ·û-@, ðfofO, ðFIX□B
%œ'œ%œñ"]Žž, ðŽ©"®fEfBf"fhfEfTfCfY·ï□X□^ —□, ðfofO, ðFIX□B

V0.59d 1993/05/21

□V<K%œ'œ, ð□ā□', «Žž, É%œ-Ê, ðfNfŠfA, μ, È, †, œ, †, É·ï□X□B
fhfLf...f□f"fgftf@fCf<, ðŠg'£Žq, É, s, w, s, à<- , ·, œ, †, É, μ, ½□B
, i, ` , fCE`Ž®, ð·\Ž!□s□", ðfofO, e, h, w□B
, a, i, oCE`Ž®, ðfy□[fXfg, ðfofO, e, h, w□B
ŠžŽšff□[f^ftf@fCf<-¼, ðžæ, è^μ, †, ðfofO, e, h, w□B
MS-Windows3.1j, Å, ðfhf%œbfO□·fhf□fbfv, ðftf@fCf<-
¼, ðžæ"¾, ðfofO, e, h, w□B

V0.59c 1992/12/14

<N"®Žž, ðff□[f^"Ç, Ý□ž, ÝffBfCEfnfgfŠ, ðŽw'è, Å, «, é—l, É, μ, ½□B
, f, h, eCE`Ž®, ð·\Ž!, ·, é, Æ, «, É, l, ` , b, ðfwfbf_ , ³ , , Ä, Ä, à%Â"\, É, μ, ½□B
, f, h, eCE`Ž®·\Ž!Žž, ðfofO□iVer.0.58^È□~□j, ð, e, h, w□B

V0.59b 1992/12/13

, i, ` , fCE`Ž®, ðCEŸ□ , , ð'¼, ðff□[f_ , É, , í, ¹, Ä, ä, é, , μ, ½□B
, f, h, eCE`Ž®, Å·\Ž!, Å, «, é, à, ð, ð^ê·"·Ç%Á, μ, ½□B

—š—ö,P

V0.59a	1992/11/25	
V0.59	1992/11/15	
V0.57a	1992/08/13	□i□·•ªŒöŠj"Å□j
V0.57	1992/08/05	
V0.56a	1992/07/01	
V0.56	1992/06/27	
V0.55a	1992/06/03	
V0.55	1992/06/01	
V0.54	1992/05/12	
V0.53	1992/04/11	
V0.52a	1992/04/05	
V0.52	1992/04/03	
V0.51	1992/03/31	
V0.50	1992/03/20	

[%œ'œĹ`Ž®](#)

,f,u,Å,í`È%º,ì%œ'œĹ`Ž®,đŽæ,è^μ,κ,±,Æ,ª,Å,«,Û,·B

.a,l,oĹ`Ž®A,c,h,aĹ`Ž®A,l,`fĹ`Ž®A,l,`j,hĹ`Ž®A,p,SĹ`Ž®A,i,o,
d,fĹ`Ž®A,f,h,eĹ`Ž®A,o,h,bĹ`Ž®A,o,%œĹ`Ž®A,s,h,e,eĹ`Ž®A,o,b,
cĹ`Ž®A,p,OĹ`Ž®A,w,a,lĹ`Ž®A,wĹ`Ž®A,q,k,dĹ`Ž®

^È%º,ìĹ`Ž®,íĹ»ÝAŽæ,è^μ,κ,±,Æ,ªo—^,Û,¹,ñB

.h,b,nĹ`Ž®A,b,t,qĹ`Ž®A,v,l,eĹ`Ž®A,X,Wfxf^Ĺ`Ž®A,l,q,aĹ`Ž®
A,r,g,fĹ`Ž®A,b,f,lĹ`Ž®A,o,b,wĹ`Ž®A,l,r,oĹ`Ž®A,o,h,b,sĹ`Ž®A,
d,o,rĹ`Ž®A,u,RĹ`Ž®A,c,w,eĹ`Ž®A,c,q,gĹ`Ž®A,c,q,vĹ`Ž®A,g,o
|,f,kĹ`Ž®A,f,o|,f,kĹ`Ž®A,q,c|,f,kĹ`Ž®

,a,l,oE`Ž®

fffofCfXCEÅ—L,İfrfbfgf}fbfv,İ•\CE»CE`Ž® ,Å,·□BMS-Windows3.0/3.1□EOS/
2,È,Ç,Å•W□€ ,İCE`Ž® ,Æ,μ,ÄŽg,í,ê,Ä,ç,Û,·□B<@ŽíŜÔ,ÅCEÝŠ·□« ,â , ,è,Û,¹,ñ,ª□A,
Û,Æ,ñ,Ç,ªf□f,fŠ□ã,ÅŽg—p,³,ê,é^x,³,Û,Ç-
â'è,É,È,è,Û,¹,ñ□B□ã<L,n,r,Å,Í□A,c,h,aCE`Ž® ,àŠg'£Žq,a,l,o,Å•Û'¶,³,ê,Ä,ç,é,±
,Æ,ª , ,è,Û,·□B

,f,u,Å,ÍWindows,ÌDIB/RLE^³□k, ,è□A,È,μ□AOS/2,ÌBMP,É'Î%ž,μ,Ä,ç
,Û,·□B,½,¾,μ□AŠg'£Žq,Í'S,ÄBMP,É,È,è,Û,·□B,±,ñ,ÈŽ-,ª , ,Á,Ä,ç,ç,Ì,©
%ž,ç,È,ç,Ì,Å,·,ª□ANECS"ÅMS-Windows,ÆEPSON"ÅMS-
Windows,Å" ,¶ff□[f^ ,ðPAINT"™ ,İfvf□fOf%of€,Å•\
Ž|,μ,½,Æ,«□A□ifn□[fhfEjfA,ª" ,¶,É,àŠÖ,ç, ,□j□F,Ì-¾,é,³,ª^Û,È,é,æ,κ
,Å,·□B,Ç,Ì,æ,κ,É%½,É, ,í,¹,Ä•â□³,μ,½,ç,ç,ç,Ì,©
%ž,è,Û,¹,ñ,Ì,Å□AfpfCEfbfg□î•ñ,ð,» , ,Û,ÛŽg,Á,Ä•\Ž|,μ,Ä, ,è,Û,·□B

,c,h,aĀ`Ž®

fffofCfX,É^Ě'¶,μ,È,ϕfrfbfgf}fbfv,ì•\Ā»Ā`Ž® ,Ā,·□BfffofCfX,É^Ě'¶,μ,È,ϕ,Ā,ϕ
,Ā,Ā,à□A□F□",ì^Ù,È,é<@Ží,Ā•\Ží,³,ê,½□ê□#□A,» ,ì<@Ží,Ā,à,Ā,Ā,à<β,ϕ
,Ā"»'f,³,ê,½□F,đŽg—p,μ,Û,·□B,²□A,±,ê,²Ā<□\,Ā,½,ç,β,È,ñ,Ā,·□B,Û,³,É,±,ê,đ
%ođĀ^ , ,é^x,É,f,u,² , ,é,ĀĀ³⁄₄,Ā,Ā,à%oβĀ³⁄₄,Ā,í,È,ϕ,Ā,μ,â,π□B

J, Ľ, fĽ Ľ Ž

,Ü,«,ž,á,ň,m,d,s,ĀŠj”³,ĕ,½MAKI02Ľ Ľ® ,Ā,·□D’ā•ī—L-¼,ĒĽ Ľ® ,Ā,·,Ē□B
»,ĭ,f,u,É,“,-,éŽæ,è^μ,ϕ,Í□A1) •”•afZ□[fu,³,ĕ,½%œ’œff□[f^,đ•\
Ž|,·,é’O,É’¼,ĭff□[f^,ª\Ž|,³,ĕ,Ā,ϕ,È,-,ĕ,ĭ□A’Ēí,ĭff□[f^,Ē“—|,É•\Ž|,·,é□B2)
‘O,É•\Ž|,³,ĕ,Ā,ϕ,é%œ’œff□[f^,ĒŽg—p,μ,Ā,ϕ,é□F,ĭvfĽ□[f“□”,ª“™,μ,,È,ϕ
,Ē,«,Í’Ēí,ĭff□[f^,Ē“—|,É•\Ž|,·,é□B3) •”•afZ□[fu,³,ĕ,½
%œ’œ,đŽw’è,³,ĕ,½^Ē’u,É•\Ž|,μ,½,Ē,«□A’O,É•\Ž|,³,ĕ,Ā,ϕ,é
%œ’œff□[f^,ĭ”Í’Í,ÉŽ;Ü,ç,È,ϕ,Ē,«,Í’Ēí,ĭff□[f^,Ē“—|,É•\Ž|,·,é□B4)
ff□[f^ftfCfY,ª•□,ª640^È□ă,©□A□,³,ª400^È□ă,ĭff□[f^,Í’Ēí,ĭff□[f^,Ē,μ,Ā•\
Ž|,·,é□B5□j,ϕ,,ĕ,É,à, ,Ā,Í,Ü,ç,È,ϕ,Ē,«,Í□A•”•afZ□[fu,³,ĕ,½
%œ’œff□[f^,Ē,μ,Ā□A’O,ĭff□[f^,đfNfŠfA,¹,,ÉŽw’è,³,ĕ,½^Ē’u,É•\Ž|,·,é□B,±
,ĭ,Ē,«□A,f,u,ªŽ□,Ā“à•”ff□[f^,Í’O,ĭ%œ’œ,Ē•”•afZ□[fu,³,ĕ,½
%œ’œ,đ□#□—,μ,½,à,ĭ,É,È,é□B,Ē,“□AfpfĽfbfg□î•ň,ÍĽă,©,ç“Ç,Ý□ž,ň,¾•”,ªŽg
—p,³,ĕ,é□B

[.l,`j,hCE`Ž®](#)

,Ü,«,¿,á,ň,m,d,s,ÅŠJ",³,ê,½MAKI01A□AMAKI01BCE`Ž® ,Å,·□B—L-
¼,ÈCE`Ž® ,Å,·□B

,p,SCE`Ž®

,p,k,cftfH[]f%of€,ÅŽg,í,ê,Ä,ç,é-,□—Ž□,ìŠ” ,³,ê,½CE`Ž® ,Å,·□B
 ,f,u,Å,Í,a,` ,sftf@fCf<,ì“à’ ,³,ê,½%ooæ‘œff[]f^ ,Í□A,a,` ,sftf@fCf<,ì•”•ª,ð-
³Ž<,μ,Äff[]f^ ,ð•Ž!,μ,Ü,·□B,Ü,½□A,p,Sftf@fCf<,Æ“~ ,¶ffBfCEfNfgfŠ,É“~ -
¼,ì,q,f,aftf@fCf<,ª“¶□Ý,·,é,Æ,« ,É,ÍpfCEfbfg,ð,q,f,aftf@fCf<,ì“à—
e,É□Ý’è,μ,Ü,·□B

.i,o,d,fCE`Ž®

,i,o,d,f[i]oint Photographic Experts Group[i]

,h,r,n[i]i'Ů•W[€%o><@[]j,Æ,b,b,h,s,s[i]i'Ů“d[M“d~bŽ[-â^î^ö
%oi[]j,É,æ,Á,Ä'g[D,³,ê,½[A%oæ'œff[f^³[]k,ì,½,ß,ìŠ[€É,ì,Á,Æ,Á,½^³[]k
%oæ'œff[f^CE`Ž®,Å,·[]B
,i,e,h,eCE`Ž®,ì,i,o,d,fCE`Ž®,Å,·[]B,o,b[]
,u,`,m,ì,r,h,f[F'm“l[î•ñ[]ŽY“™,Éff[f^,ª, ,è,Ü,·[]B
,i,o,d,fff[f^“Ç,Ý[]ž,Ý[A•İŠ•”•ª,É,ÍIndependent JPEG
Group,É,æ,Á,Ä[ì[]¬,³,ê,½f<[]f`f“,ðCE³,É,µ,Ä,ç,Ü,·[]BCE»[]Ý—~—p,µ,Ä,ç,éf
%ofCfuf%ofŠ,ìfo[]fWf#f“,í,S,Å,·[]B,i,o,d,fCE`Ž®,ð•\Ž|,·,é,É, ,½,Á,Ä[]A,ç,-
,Â,©,ìf|fvfVf#f“,ª, ,è,Ü,·,ì,Å[]A f[]fj...[]l,ì'l'ð,ð,µ,Ä,,¾,³,ç[]B
CE,[]ff|fvfVf#f“,ðŽw'è,·,é,Æ[]A,i,o,d,fff[f^,ð•\Ž|,·,é,Æ,«Éftf<fj
%o[][,©,ç,Q,T,U[]F,ÉCE,[]F,·,é,Æ,«É,P,o,`,r,r,Å[]s,ª,æ,ª
,É,µ,Ü,·[]B,»,ìCE<%oÊ[]A•\Ž|,í'½[]'¬,,È,è,Ü,·,ª[]A[]F,ì[]ÄCE»[]«ª^«,,È,è,Ü,·[]B
,Ü,½[]AMAC,È,Ç,Å,Â,,ç,ê,½PICT/JPEG^³[]k,ìftf@fCf<,É,à'í%ož,µ,Ä,ç
,Ü,·[]B,P,Â,ìftf@fCf<,É•i[]”,ìff[]f^,ªŠÜ,Ü,ê,Ä,ç,é[]ê[]#,É,í[]A[]æª,ìff[]f^,ì%o
i•[]AE,»,ê^È[]~,ìff[]f^,ì%oi•[]ª“¬,¶Žž,É,í[]c,É~ACE<,µ,Ä•\Ž|,µ,Ü,·[]B

,f,h,eĀ`Ž®

,f,h,eĀGraphics Interchange FormatĀj

CompuServe ,Ā,Āšj” ,³,ĕ,½Ā`Ž® ,Ā,ĀB

Ā»foĀ[fwf#f” ,Ā,Ā,f,h,e,w,v,ĀĀA,w,x,Ā,ĀĀĀ,ç,ĕ,½
%œ’œffĀ[f^Āi,Pftf@fCf<,P%œ’œĀj,Ā,Ÿ•\Ž!%Ā”\,Ā,ĀB,½,¾ĀĀŝĀ-
{“Ā,Ē,Ā,Ā,w,x,Ā,Āŝg’Ē,³,ĕ,½<@”\,Ē,Ā,ç,Ā,Ā’Ā%ž,μ,Ā,ç,Ū,¹,ňĀB

,o,h,bĚ`Ž®

-ö'ò@-¾,³,ñ,ª½F%œ'œi"Á,É,w,U,W,j—p[j,ÉŠ]" ,³,ê,½
%œ'œftfH[f}fbfg,Å,·B"Á,ÉŽè' ,«,ì%œ'œff[f^,ì³k,É,Í<,ç,æ,π
,Å,·B,à,Æ,à,Æ,Í,w,U,W,j]ê—
p,É<β,©,Á,½,ì,Å,·,ªACE»Ý,Å,íA,l,` ,bA,o,b,W,WA,» ,ì¼,ç,ë,ç
,ë,È<@Ší,É^ÚA,³,ê,Ä,ç,Û,·B,o,h,bĚ`Ž®,í,i,o,d,fĚ`Ž®,Æ^á,çA
%oÂ<t³k,Å,·,ì,Å%œ'œî•ñ,ì—ò%» ,í, ,è,Û,¹,ñB,½,¾,μA,» ,ìª³k—|,ª'á,ç
,½,βA,æ,è³k—|,ì,,çPIC2i%¼ìjftfH[f}fbfg,ðŠj""t,Å,·B
Ě³XX68K,Åì,ç,ê,½ff[f^,ª½,ç
,½,βAX68K,ìff[f^f^fCfv,ì,à,ì,ífAfXfyfNfg"ä,ðŽ© "®"l,ÉC³,μ,Ä•Ž!,·,é,±
,Æ,ª%oÂ"\,Èf|fvfVf‡f",ª—p^Ó,μ,Ä, ,è,Û,·B0x00/0x01/0x03/0x11/0x21/0x52/
0xC2/0x0F/0X1F/0XFF,ÅA16/256/4096/32K/64K/16M[F,ì,à,ì,ðĚ»Ýftf|
[fg,μ,Ä,ç,Û,·B,½,¾,μA•"•ª•Ž|<@"\,ífTf|[fg,μ,Ä,ç
,Û,¹,ñBŠg'£ftfH[f}fbfg,ì^ê•" ,É'í%ž,μ,Û,μ,½B

,o,%oCE`Ž®

-ö'ò@-¾,³,ñ,ŠJ",³,ê,½,P,U□FfOf
%oftfBfbfNftfH□[f}fbfg,Å,·□B□i,o,h,bCE`Ž®,æ,è,b(olor),²□,È,ç,½,ß,o,%o
,Æ,È,Á,Ä,ç,Ü,·□B"Á'¥,Æ,μ,Ä,Í^³□k—!,â"WŠJ'—"x,²CE<□\—D,ê,Ä,ç,é"_,²,°,ç,ê,
Ü,·□B
ff□[f^,É,Í□A16/256□F□AfpfCEfbfg□î•ñ, ,è□^ffftfHf<fgfpfCEfbfg—~—
p,ì'g,Ý□‡,í,¹,Å,SŽÍ—P'¶□Ý,μ,Ü,·,²□AŽèŽ□,¿,ìff□[f^,ÉffftfHf<fgfpfCEfbfg—~—
p,ì,à,ì,²,È,©,Á,½,½,ß□AfefXfg,μ,Ä,ç,Ü,¹,ñ□B

.s,h,e,eCE`Ž®

Tagged Image File Format ,ÍfAf<f_fXŽĐ<y,Ńf}fCfNf□f\
ftfgŽĐ,afXfLfffi,ì^x,ÉŠJ” ,μ,½CE`Ž® ,Å□AfOfCE□[fXfP□[f<,đ□_“î,É•\CE»□o—
^,é,ì,ª“Á¥,Å,·□Bf^fOf□[f^ ,Æ,μ,Ä<@Ží,ìî•ñ,đŠÜ,Ü,¹,é,±,Æ,ª□o—
^,é,½,β□A,½,,³,ñ,ìŽí—p,ª, ,è,Ü,·□B,f,u,U,R,Í^È%º,ì,à,ì,É^î%ž,μ,Ä,ç,Ü,·□B

- ”□•2^l%ºæ’œ (Class B)
- ”□•¹½ŠK’²%ºæ’œ (Class G)
- ÊßÚ~Ä¶x°ºæ’œ (Class P)
- 24ËP~ÄìÜ¶x°ºæ’œ (Class R)
- CMYKCE`Ž®¶x°ºæ’œ (Class S)
- TOWNSCE`Ž®%ºæ’œ (TOWNS“ÆŽ©)

,Ü,½□Af%ofCfuf%ofŠ,Æ,μ,ÄTIFFKIT v1.27,đ,f,u—p,É’²□β,μ,½,à,ì,đ—~—
p,μ,Ä,ç,Ü,·□B

Based in part of TIFFKIT Copyright(C) 1991-1994 Noboru Abe

□! TIFF ,àŽž’ă,Æ<α,É•î’J,μ,Ü,μ,½□BCE»fo□[fWf#f“ ,Í□ATIFF Version 6.0
,ª•□’É,Å,·□B

,o,b,cE`Ž®

KodakŽĐ,ì“o~^□▪•W□i,¾,ÆŽv,ç,Ü,·□H□j,Å□AŽÊ□^,đCD-ROM,É□Ä,«•t,¯,é,Æ,«,ÉŽg,ꝛE`Ž®,Å,·□B□iPHOTO-CD□j

,f,u,Å,Í^È%º,ìfvf□fOf%ºf€,đE³,É□A,Ü,½“ÆŽ©,Éff□[f^%ºđ□í,đ,“,±,È,Á,Ä•\Ž!,μ,Ä,ç,Ü,·□B

/* hpcdtoppm (Hadmut's pcdtoppm) v0.5pl1
□@* Copyright (c) 1992, 1993 by Hadmut Danisch
(danisch@ira.uka.de).

,Ü,½□A,f,u,Å,Í□¬,³,çfTfCfY,R,Â,É,μ,©'í%ž,μ,Ä,ç,Ü,¹,ñ□B

,p,OE`Ž®

%œ'œ•\Ž!,ì,½,ß,Éff[f^fTfCfY,ìî•ñ,đFAL/IPRftf@fCf<,©,çŽæ“¾,μ,Ä,φ
,Ü,·B,±,ì,Ç,¿,ç,©,ìftf@fCf<,³Q0ftf@fCf<,Æ“˘,¶fffBfÆfNfgfŠ,É'¶Y,μ,Ä,φ,È,φ
,Æ,«,É,íA640x400,ì%œ'œ,Æ,μ,Ä•\Ž!,μ,Ü,·B

[,w,a,IC`Ž®](#)

,w|,v,%o,Ž,,,□,— ,Å,ìĀ`Ž® ,Å,·□B

,f,u,Å,íff□[f^“à,ì / * fRf□f“fg */ •”•_q,đ•\Ž!,μ,Ü,·□B

,wCE`Ž®

,i,t,m,d,s□ã,Å,ì,w,a,l,đ%ü—Ç,μ,½CE`Ž®,Å,·□B

,h,b,nĀ`Ž®

,v,h,m,c,n,v,r,É,¨,´,éAfCfRf“,ì•W□€Ā`Ž® ,Å,·□B,v,h,m,c,n,v,r,R□D,P•t'® ,ì
fAfNfZfTfŠ,ì't,ìfAfCfRf“fGfffBf^ ,Å“Ç,Ý□ž,p,±,Æ,ª□o—^,Ü,·,ª□A^ê•”,ìftfŠ□[f\
ftfg,Å□ì,ç,ê,½fAfCfRf“,í“Ç,Ý□ž,ß,È,ç,±,Æ,ª ,è,Ü,·□B,» ,ì□ê□‡,ífvf□fOf
%of€f}f|□[fWff“™ ,É“o~^ ,µ,½Āă□AfXfifbfvfVf‡fbfg,É,æ,é,a,l,o,Ö,ì•İŠ,ð□s,ꝛ
,±,Æ,ª□o—^,Ü,·□B

,b,t,q€`Ž®

,v,h,m,c,n,v,r,É,¨,¯,éj][f]f<,ì•W][€€`Ž®),Å,·[B,v,h,m,c,n,v,r][
,r,c,j,R[D,P•t'®),ìfCf][fWfGfffBf^),Å“Ç,Ý[ž,p,±,Æ,ª[o—
^,Ü,·[B,»),ì€ă,a,l,o€`Ž®),Æ,µ,ÄfNfŠfbfvf{[f]h,É“}]’—[o—^,Ü,·[B

[,q,k,dĚ`Ž®](#)

,v,h,m,c,n,v,r,É,¨,˘,é•W□€,ì%œ'œ^³□kĚ`Ž®,Å,·□Bf
%of“fĚf“fOfXfGf“fR□[fhftf@fCf<(Run-Length Encoded File),ÆĚÄ,Î,ê,Ä,č
,Ü,·□B,v,h,m,c,n,v,r,ì□Å□%o,ì□fS%œ-Ê,Í,±,ìĚ`Ž®,ÅŠi”[,³,ê,Ä,č,Ü,·□B
,f,u,Å,Í,a,l,oĚ`Ž®,Æ,μ,Ä“Ç,Ý□ž,ň,Å%oº,³,čŽ©“®Ž˘•Ê,³,ê,Ü,·□B
frfWf...fAf<,a,` ,r,h,b,ì LoadPicture f□f□bfh,Å“Ç,Ý□ž,p,±,Æ,à□o—^,Ü,·□B

,v,l,eĀ`Ž®

,v,h,m,c,n,v,r|f^ftj@fCf<Ā`Ž®,Å,·B,v,h,m,c,n,v,r,ì•W|€fxNf^Ā`Ž®,Å,
·B,l,r|,v,n,q,c•t'®,ì,l,r|,c,q,`,v,ì|u•"•i"Ç,Ý|ž,Ý|v,Å"Ç,Ý|ž,p,±,Æ,³|o—
^,Ü,·B'A,μ,c,q,`,v,Å"Ç,Ý|ž,p|ê|c|',«ftjHf"fg,í³,μ,"Ç,Ý|ž,β,È,ϕ,æ,κ
,Å,·B,c,q,`,v,Å"Ç,Ý|ž,ñ,¾Āě,íXfifbfvfVf#fbfg,É,æ,é,a,l,o,Ö,ì•İŠ,ð|s,Á,Ä,a,l,
oĀ`Ž®,É,μ,Ü,·B^êŽžŠúfAf<f_fXŽĐ,ìŠg'£,É,æ,é•ûĀ¾,à, ,è,Ü,μ,½,³,v,h,m,c,
n,v,r,R|D,P,Å,í,»,ê,à³Ž®,ÈĀ`Ž®,Æ,μ,Ä"F,β,ç,ê,½—l,Å,·B

.X,Wfxf^Ā`Ž®

,o,b|,X,W,O,P|i,»,)ĀÝŠ·<@,đŠÜ,P|j,lfof
%oftfBfbfN,u,q,` ,l,lf|f,fŠfCf|fW,đ,»,)Ü,Üftf@fCf<,É,μ,½,à,ì,Å,·|B,SfvfĀ[f“
|i,q|A,f|A,a|A,x|j,ª•Ēftf@fCf<,É,È,Á,Ä,č,é,Ā,«,í|A,m,W,W|
,a,` ,r,h,b,ì,a,k,n,` ,c-½—β,Å“Ç,Ýž,þ,±,Ā,ª|o—
^,Ü,·|B,v,h,m,c,n,v,r,ì,c,n,r|v|f“fvfg,©,ç,m,W,W|,a,` ,r,h,b,đ—š,ž|ã,°,Ä,“,č
,Ä|A|ã<L•û-@,Å“Ç,Ýž,Ý|A|Xf|fb|fv|V|f|b|fg,É,æ,é,a,l,o,Ö,ì•ĪŠ,đ|s,±
,Ā,Å|A,a,l,oĀ`Ž®,É,·,é,±,Ā,ª|o—^,Ü,·|B

.l,q,aĀ`Ž®

.l,q,a(Multi Resolution Bitmap)

f}f<f`‰đ'œ"x'î‰žfrfbfgf}fbfv,Å,·B"Á'è,ì‰đ'œ"x,đŽ,ÂfffBfXfvfĀfC(—
á,î,î VGA ,â 8514) ,î^x,ÉŸĀv,³,ê,½frfbfgf}fbfv,đ•i"ĀĀŠÜ,þ,v,h,m,c,n,v,r
—p,îfrfbfgf}fbfvtf@fCf<,Å,·B—á,î,îfwf<fvtf@fCf<"à•",îfrfbfgf}fbfv,É,±
,ìĀ`Ž®,đ—p,č,ê,îĀfwf<fv<N"®Žž,ífffBfXfvfĀfC,ì‰đ'œ"x,âjff‰[•\Ž!"\—
Í,đ'²,xĀfffBfXfvfĀfC,É,à,Á,Æ,à"KØ,Èfrfbfgf}fbfv,đ•\Ž!,μ,Û,·B

[,r,g,fĀ`Ž®](#)

,v,h,m,c,n,v,r,ì•W€fnfCfp[]fOf
%oftfBfbfNfXĀ`Ž®,Å,·[]B,v,h,m,c,n,v,r•W€
,ì,a,l,oĀ`Ž®,â[]A,v,l,eĀ`Ž®,È,Ç,ì
%œ'œ,ÉfRf“fefLfXfg[]î•ñ,Æ,»,ì[]À•W,Æ,ð'Ç%oÁ,μ,½,à,ì,Å,·[]B—
á,ì,îfwf<fvftf@fCf<,É,±,ìĀ`Ž®,ð—p,ç
,ê,î[]Afrfbfgf}fbfv“à•”,ì“Á'è,ì“_ðfNfŠfbfN,·,é,¾,¯,Å,»,ìfgfsfbfN,ÖfWfff“fv,³,¹,é
,±,Æ,^ao—^,é,æ,α,É,È,è,Ü,·[]B
,v,h,m,c,n,v,r[]|,r,c,j,R[]D,P[]AfrfWf...fAf<,b[]^,b[]{}[]AfrfWf...
fAf<,a,`,r,h,b[]i,o,q,n[]j•t'®,ìfzfbfgfXfjfbfgfGfffBf^,Å“Ç,Ý[]ž,p,±,Æ,^ao—
^,Ü,·[]B,»,ìĀ`Ž®,Ā,μ,ÄfNfŠfbfvf{[]fh,É“]—o—^,Ü,·[]B

,b,f,lĀ`Ž®

, ` ,m,r,h,Å\$`è,³ê,^{1/2}xfNf^Ā`Ž®,ì•W€,Å,·B,l,r],v,n,q,c•t'®,ì,l,r]
,c,q,`,v,ìu•”•i“Ç,Ýž,Ýv,Å“Ç,Ýž,p,±,Æ,³o—
^,Ü,·B'A,μ“Ç,Ýž,β,é,ì,ÍA,`,m,r,h CGM Specification Version 1
,lfTfufZfbfg,ÉĀ`è,³ê,Ä,ϕ
,Ü,·B,c,q,`,v,Å“Ç,Ýž,ñ,^{3/4}Āã,ÍXfifbvfVf#fbfg,É,æ,é,a,l,o,Ö,ì•İŠ,ðs,Á,Ä,a,l,
oĀ`Ž®,É,μ,Ü,·B

[,o,b,wCE`Ž®](#)

PC Bitmap,ÆCEÄ,î,ê,éCE`Ž®|B,l,r|,v,h,m,c,n,v,r•t'®,ìufyfCf“fgfuf
%ofVv,Å“Ç,Ýž,þ,±,Æ,ºo—^,Û,·BfyfCf“fgfuf
%ofV,Å“Ç,Ýž,ñ,¾CEã,í,a,l,oCE`Ž®,Å•Û'¶,·,é,±,Æ,ºo—^,Û,·B

.l,r,oĀ`Ž®

fo[fWf#“,QD,w^È‘O,ì,v,h,m,c,n,v,r,É•t’®,μ,Ä,φ,½,“ŠG•`,`«f\
ftfgufyfCf“fgv,ìĀ`Ž®B,l,r|,v,h,m,c,n,v,r•t’®,ìufyfCf“fgfuf
%ofVv,Å“Ç,Ýž,þ,±,Æ,ºo—^,Û,·BfyfCf“fgfuf
%ofV,Å“Ç,Ýž,ñ,¼Āã,í,a,l,oĀ`Ž®,Å•Û‘¶,·,é,±,Æ,ºo—^,Û,·B

,o,h,b,sŒ`Ž®

,o,h,b,s iPicture j

f}fbfLf“fgfbfVf...,i•W fOf
%oftfBfbfNŒ`Ž®,ÅxfNf^Œ`Ž®,Å,·B(Macintosh PICT Œ`Ž®)
,v,l,eŒ`Ž®,Ö,i•İŠ,ªi,l,ç,ê,Ü,·ª,“x,Èvf fOf%of€,đi¬,·,é•K—v,ª, ,è,Ü,·B

.d,o,rE`Ž®

,d,o,r,e iEncapsulated PostScript Format j

Adobe SystemsŽĐ,ÁŠJ” ,³,ê,½E`Ž® ,Á,·B ,•iŽž,ìo—
Í,ª“¾,ç,ê,é,ª<L q,µ,½“à—e,ª’.,,ÈE±“ _ª, ,è,Ü,·B,Ü,½A Postscript ,ìff [f^,Í
Mac ,Æ,» ,ê^ÈŠO,Æ,ç,æ<æ•Ê,ª, ,è,Ü,·B
f|fXfgfXfNfŠfvfg’î%ž,ìfvfŠf“f^ ,Á^óŽš,³,¹,é,±,Æ,Ío—
^,Ü,·B,a,l,oE`Ž®,Ö,ì•İŠ,Í,l,r|,c,q,` ,v,Á“Ç,Ýž,þ,±,Æ,Á%oÂ”\,Á,·B

,u,RĚ`Ž®

fAfXfL[†Š,ì,b,`,m,c,xfvfš[fY,ÅŠO•"fAfvfšfP[fVf†f",ì^x,ÉfTf|[fg,μ,Ä,φ
,éxfNf^Ě`Ž®,Å,·B,m,W,W|,a,`,r,h,b,ÅŠÈ'P,Èfvf[fOf%of€,đì¬,·,é,±,Æ,Å
%œ-Ê,É·\Ž!o-^,Ü,·B,v,h,m,c,n,v,r,ì,c,n,r,fv[f"fvfg,©,ç,m,W,W|
,a,`,r,h,b,đ-š,ž,ã,°,Ä,"ç,ÄAã<L•û-
@,Å"Ç,Ýž,ÝAfXfifbfvf†bfg,É,æ,é,a,l,o,Ö,ì•İŠ,đs,±,±
,Æ,ÅA,a,l,oĚ`Ž®,É,·,é,±,Æ,°o-^,Ü,·B

,c,w,eĀ`Ž®

,c,w,e□iData Exchange Format□j

‘â’Ē□π%oi‡Š,ì,`,•,”□,b,`,cfVfŠ□[fY,ÅŠO•”fAfvfŠfP□[fVf‡f“,ì^×,ÉfTf|
□[fg,μ,Ä,ç,éxfNf^Ā`Ž®,Å,·□B,©,È,è•;ŽG,È^×□A,a,l,oĀ`Ž®,Ö,ì•İŠ,Í□
ç“i,Å,·□B

,c,q,gĀ`Ž®

fWfffXfgfVfXfef€‡Š,ì%oÔŽq,ÅfTf|[]fg,μ,Ä,ç
,éxfNf^Ā`Ž®,Å,·[]B,v,h,m,c,n,v,r,ì,c,n,r,fv[]f“fvfg,©,ç%oÔŽq,đ—
š,ž[]ã,°,Ä,¨,ç,Ä[]AfXfifbvfVf‡fbfg,É,æ,é,a,l,o,Ö,ì•iŠ:,đ[]s,±
,Æ,Å[]A,a,l,oĀ`Ž®,É,·,é,±,Æ,°[]o—^,Ü,·[]B

,c,q,vĚ`Ž®

f}fCfNf[]fOf%oftfBfbfNfX†Š,ìffUfCfi,ÅfTf|[]fg,μ,Ä,φ
,éxfNf^Ě`Ž®,Å,·[]BffUfCfi,đ—š,¿[]ă,°,Äftf@fCf<,đ“Ç,Ý[]ž,ÝfNfŠfbfvf{[]fhĚo
—R,Å[]A,a,l,oĚ`Ž®,É,·,é,±,Æ,ª[]o—^,Ü,·[]B

.g,o|,f,kĚ`Ž®

fqf...|[fĚfbfgfpfbfj|[fhŽĐ,ĀŠ]” ,³,ê,½fvf|fbf^,ì^x,ìfxfNf^Ě`Ž®|B,â,â-Ê“|
,Ā,·,ª,m,W,W|,a,`,r,h,b,Āfvf|fOf%of€,đì|¬,·,é,±,Æ,Ā%œ-Ê,É•\Ž!|o—
^,Û,·|B,v,h,m,c,n,v,r,ì,c,n,r|fvf|f“fvfg,©,ç,m,W,W|,a,`,r,h,b,đ—š,¿|ã,°,Ā,“,ç
,Ā|A|ã<L•û-@,Ā“Ç,Ý|ž,Ý|A|X|f|b|f|v|f|f|b|f|g,É,æ,é,a,l,o,Ö,ì•İŠ,đ|s,±
,Æ,Ā|A,a,l,oĚ`Ž®,É,·,é,±,Æ,ª|o—^,Û,·|B,Û,½fffUfCfi“™,|f\
ftfg,Ā,í¼|Ú“Ç,Ý|ž,p,±,Æ,ª|o—^,Û,·|B|u,g,o|,f,k|€<|v,Æ|’,ç,Ā, ,Á,Ā,à,©,È
,è,ì•ûĚ¾,ª“|Ÿ|,·,é,ì,ª“i“_ ,Ā,·|B|fvf|fbf^,ì^x,ìĚ`Ž®,Æ,μ,Ā,í|A¼,É,f,o|
.f,kĚ`Ž®|A,q,c|,f,kĚ`Ž®|A|f|€|f|g|f|E|š|Ě`Ž®“™,ª, ,è,Û,·|B

[,f,o|,f,kĚ`Ž®](#)

fOf%oftfefbfNŽĐ□i<Ě-¼□F“n•Ó‘Ši‡Š□j,ÅŠj”-
,³,é,½fvf□fbf^,ì^x,ìfxfNf^Ě`Ž®□B,â,â-Ê“|,Å,·,ª,m,W,W□|,a,`,r,h,b,Åfvf□fOf
%of€,đ□i□¬,·,é,±,Æ,Å%œ-Ê,É•Ž!□o—
^,Ü,·□B,v,h,m,c,n,v,r,ì,c,n,r,fvfvf“fvfg,©,ç,m,W,W□|,a,`,r,h,b,đ—š,¿□ã,°,Ä,“,¢
,Ä□A□ã<L•û-@,Å“Ç,Ý□ž,Ý□AfXfifbfvfvf#fbfg,É,æ,é,a,l,o,Ö,ì•İŠ·,đ□s,π,±
,Æ,Å□A,a,l,oĚ`Ž®,É,·,é,±,Æ,ª□o—^,Ü,·□B

.q,c|,f,kE`Ž®

f|[f%of“fh,c,f+Š,ÅŠJ”,³,ê,½fvf|fbf^,ì^×,ìxfNf^CE`Ž®|B,â,â-Ê“|
,Å,·,ª,m,W,W|,a,`,r,h,b,Åfvf|fOf%of€,ðì|¬,·,é,±,Æ,Å%æ-Ê,É•\Ž!|o—
^,Ü,·|B,v,h,m,c,n,v,r,ì,c,n,r|vf|f“fvfg,©,ç,m,W,W|,a,`,r,h,b,ð—š,¿|ã,°,Ä,“,ç
,Ä|A|ã<L•û-@,Å“Ç,Ý|ž,Ý|AfXfifbfvfvf+fbfg,É,æ,é,a,l,o,Ö,ì•İŠ·,ð|s,±
,Æ,Å|A,a,l,oCE`Ž®,É,·,é,±,Æ,ª|o—^,Ü,·|B

fxNf^Ď`Ž® (fXfgf[] [fNĎ`Ž®)

%æ'œ,đü,â%~ĎĎ,ì'g,Ý#,í,¹,Æ,μ,Ä•\Ď»;,é•û-@,ì'[]ì[]Bf
%fXf^Ď`Ž®,ÉŠr,x,Äf[]f,fŠ,ì'Á"i,â[],È,ç[]A[]L[]k,âŽ©—
RŽ©[]Ý"™,ì'[]Š,đŽ[],Â,â[]A•`
%æ,â'x,ç"i"_,đŽ[],ž,Ü,·[]BfXfgf[] [fNĎ`Ž®[]Afhf[] [Ď`Ž®[]A"™,Æ,àĎÄ,î,ê,é
[]B,b,`,c,âfOf%oft,ì•\Ď»,ÉĎü,ç,Ä,ç
,Ü,·[]B,f,u,ífxfNf^Ď`Ž®,đ^μ,xfhf[] [Ďn,ìf\ftfg,Å,í, ,è,Ü,¹,ň[]B

f%ofXf^Ĉ`Ž®(fsfNf`ff[Ĉ`Ž®)

%oæ'œ,đ" _ìW,Ü,è,Æ,μ,Ä•\Ĉ» , ,é•û-
@,ì' _ìBfxfNf^Ĉ`Ž®,ÉŠr,x,Ä'€ì,², '¬A•;ŽG,È%oæ'œ,đ^μ,|,éA,ÆĈ³/4,κ
—~" _², ,é,²Af□f,fš,đ'â—Ê,ÉÁ"i, ,éAfffofCfX^Ě'¶«,đ%oñ"đo—
^,È,ç"™,ì"i" _², ,è,Ü,·Bfrfbfgf}fbfvĈ`Ž®Afycf"fgĈ`Ž®AfsfNf`ff[Ĉ`Ž
®"™,Æ,àĈÄ,î,ê,Ü,·BŽÊ^AfCf%ofXfg"™,ì•\Ĉ» ,ÉĈü,ç,Ä,ç,Ü,·B,f,u,ÍŠî-
{"l,Éf%ofXf^Ĉ`Ž®,đ^μ,κfyfCf"fgĈn,ì\ftfg,Å,·B

fXfifbfvfVf#fbfg,É,æ,é,a,l,o,Ö,ì•İŠ.

fXfifbfvfVf#fbfg,Æ,í•\Ž!,³,ê,Ä,ç,é%œ-
Ê,ð,a,l,oĚ`Ž®,Æ,μ,ÄfNfŠfbvf{[fh,Ö"]'—,·,é,±,Æ,Å, ,é□B,v,h,m,c,n,v,r,R□D
,O,æ,é'O,Å,í□A,r,c,j•t'®,ìfXfifbfvfVf#fbfg,ÆĚ^{3/4},xfAfvfŠfP□[fVf#f",^a•K—
v,^{3/4},Á,^{1/2},^a□A,v,h,m,c,n,v,r,R□D,O^È~ ,Å,ífVfXfef€,Å,ìftf|[fg,Æ,È,Á,^{1/2}□B
%œ-Ê,ð-Ú"l,ìó'Ô,É,μ□A,b,n,o,xfL□[,ð%ÿ,·,Æ%œ-
Ê,^afNfŠfbvf{[fh,ÉfRfs□[,³,ê,é□B, ,Æ,í,v,h,m,c,n,v,r•t'®,ìfyfCf"fgfuf
%ofV,É□u•Ò□W□{"\,è•t,~□v,·,ê,î—ç,ç□B,±,ì,Æ,«—\,ß□u•\
Ž!□{□k□-□v,ð,μ,Ä," ,©,È,ç,Æ%œ-Ê'S'ì,^a"\,è•t,~□o—^,È,ç,ì,Å'□^Ó,·,é□B-
Ô,©, ,ìó'Ô,É,È,Á,^{1/2},ç,à,π^ê"x□u•Ò□W□{"\,è•t,~□v,ð,·,é□B, ,Æ,ìftf@fCf<,Æ,μ
,Ä•Ù'¶,·,é,È,è,È,ñ,È,è,Æ□B
,c,n,r,vf□f"fvfg"à,Å,ìfXfifbfvfVf#fbfg,í□A,o,h,eftf@fCf<,©,ç,ì<N"®,^a•K—
v,É,È,é□B,v,h,m,c,n,v,r•t'®,ì,o,h,efGfffBf^,Å□Ú□×□Ý'è,ì%œ-Ê•\
Ž!,ðfefLfXfg,©,çfOf%oftfBfbfNfX,É□Ý'è,μ,Ä," ,□B•W□€
,ì,c,n,r,vf□f"fvfg,©,ç,Å,ífOf%oftfBfbfNfX%œ-Ê,Å,í,È,-
□AfefLfXfg,^afNfŠfbvf{[fh,É"]'—,³,ê,Ä,μ,Ü,π,ì,ÅfjXf^f}fCfY,^a•K—v,^{3/4}□B,±
,ì•û-@,Å-w,ç,ì%œ'œ,ð,a,l,oĚ`Ž®,É•İŠ,Å,« ,é,^a□A,±,π,μ,ÄfRfs□[,μ,^{1/2}
%œ'œ,ífpfĚfbfg,ì%œ<ç,ð"½%of,μ,Ä,ç,È,ç,ì,Å□A,f,u,ì""W,^a-],Ü,è,é,Æ,±
,è,^{3/4}□B

fyfCf“fgCEn,lf\ftfg

Žå,Éf%ofXf^CE`Ž®,ìff□[f^,đ^μ,xf\ftfg□B,v,h,m,c,n,v,r•t'®,ìfyfCf“fgfuf
%ofV,ª,»,ì'ã•\Ši□B,f,u,à,±,ê,É'®,·,é□BfAfcfRf“fGfffBf^,âfcf□□[fWfGfffBf^,ª, ,
é□B

[fhf□□\[CEn,lf\ftfg](#)

Žå,ÉfxNf^CE`Ž®,ìff□[f^,ð^μ,xf\ftfg□B,l,r□|,v,n,q,c•t'®,ì,l,r□|
,c,q,`,v,ðŽn,β□Af}fCfNf□fOf
%oftfBfbfNfX#Š,ìfffUfCfi□A"üŠ;fA□[fg□AfC□[fXfg#Š,ìfAfbfVf...fhf□□[□A"à"]
,v,h,m,b,`,c□A'â'Ë□æ%öi,ì,`,•,"□,b,`,c"™,ª, ,é□B,c,n,r"Å,Å,í□AfAfXfL□[,ì,b,`,
m,c,x,âf_fCfifEjFfA#Š,ìf_fCfi,b,`,c"™,ª—L-¼□B

ŠÖ~A—pĀÊ

fhf%ofbfO□•fh□fbfv
fNfŠfbfvf{□[fhftfH□[f}fbfg
fvf%ofCfx□[fgftfH□[f}fbfg
fffBfĀfCfhfĀf“f_Šf“fO
fffBfU
fy□[fWff□[
fAfXfyfNfg”ä
fpfĀfbfg□î•ñ
fpfĀfbfg<@”\
fmf“fvfŠfGf“fvfefBfu
□%oŠú%o»ftf@fCf<
f_fCfif~fbfNff□[f^fGfNfXf`fFf“fW(,c,c,d)

fy[]fWff[]

%oæ'œftf@fCf<,Æ"~,¶ffBfCEfNfgfŠ,É□A"~,¶ftf@fCf<-¼,ÅŠg'£Žq,ª DOC ,©
Q4D,ìftf@fCf<,ª'¶[]Ý,·,é,Æ,«,ÍŽw'è,μ,½fy[]fWff[],ÅfhfLf...f[]f"fgftf@fCf<,ð•\
Ž!,μ,Ü,·□Bfy[]fWff[],ìffftfHf<fg,Í notepad.exe
,Å,·□B,Ü,½□A•i"%"%oæ'œff[]f^,ì~ACE<<@"\,ðŽg—
p,μ,½,Æ,«,í□A,Q,Â,ìff[]f^ftf@fCf<-¼,ì<æ'Ê,ì•"•ª,ðftf@fCf<-
¼,Æ,μ,ÄŽ□,Á,½fhfLf...f[]f"fgftf@fCf<,ð•\Ž!,·,é,±,Æ,ª□o—
^,Ü,·□B,Ü,½□Afy[]fWff[],í•\Ž!%oæ'œ,ª•ï,í,Á,½Žž□A,f,u,ì□I—
¹Žž,Éž©“®“l,É□I—¹,μ,Ü,·□B

[fhf%fbfO • fhf fbv](#)

Windows 3.0, Æ 3.1, É'í%ž, μ, Ä, ç
, Ü, · □ Bftf@fCf<f}f □ [fWff, È, Ç, ©, çftf@fCf<, ðfhf
%fbfO, μ □ A, f, u, É □ ifAfCfRf" □ ó'Ô, Å, à%oÂ □ jfhf □ fbv, μ, Ü, ·, Æ □ A, » , ìff □ [f^, ð • \
Ž, μ, Ü, · □ B

• i □ "ftf@fCf<, ìfhf%fbfO • fhf □ fbv, ì □ ê □ # □ AŽè" ® ~ A' ± • \
Ž, , " , æ, ÑŽ © " ® ~ A' ± • \Ž, , æ%oÂ" \
, Å, · □ BŽè" ® , É, ·, é, © Ž © " ® , É, ·, é, © , í μ ß ¼ ® Ý □ ^ • \Ž ìff □ [f^, É, Ä □ s, ç
, Ü, · □ BŽè" ® ~ A' ± • \Ž, ì □ ê □ # □ A, Ü, , , ð, Æ, Å, ìff □ [f^, ì, Ý, ð • \Ž, μ □ A' ¼, ìftf@fCf<, í • \
Ž ìfŠfXfg, É " o ~ ^, , , é, Ü, · □ Bf}fEfX, ì □ ¶f {f^f" , ð%oÿ, ·, Æ ^ È%oº, ìf □ jfj... □ [, æ • \
Ž, , , é, Ü, · □ B

Next Data: Žÿ, ìff □ [f^ • \Ž ì
Previous Data: 'O, ìff □ [f^, ì • \Ž ì
DATA List...: ff □ [f^, ìfŠfXfg • \Ž ì

, Ü, ½ □ A □ ¶f {f^f" , ð%oæ'œ, æ, æ • \Ž, , , é, Ä, ç
, éfEfBf"fhfE, Åf_fuf<fNfŠfbfN, ·, é, Æ □ AŽÿ, ìff □ [f^, æ • \Ž ì □ iNext
DATA □ j, , , é, Ü, · □ B, ±, ì < @ " \, ì Ž À □ Ú, ì — ~ — p • ù -
@, Æ, μ, Ä, í □ A • i □ "ftf@fCf<, ð, f, u, Éfhf □ fbv Æ ä □ A □ ¶f}fEfXf {f^f" , ìf_fuf<fNfŠfbfN,
É, æ, Á, Ä □ # Žÿ%oæ'œ, ð • \Ž, , , , é, Æ, ç, Á, ½, à, ì, É, È, è, Ü, · □ B

Ž © " ® ~ A' ± • \Ž, ì □ ê □ #, í □ AŽw'èŽžŠÔŠÔŠu, Å, " , ±, È, ì, Ü, · □ B, ±
, é, ç, ì □ Ý'è, ìf ìfvfVf†f" , ìData Info..., Å, Å, «, Ü, · □ B

fNfŠfbfvf{[fhftfH[f}fbfg

fNfŠfbfvf{[fhftfH[f}fbfg,ìĚ`Ž®,í,c,h,aĚ`Ž®A,a,l,oĚ`Ž®<y,ŇfpfĚfbfg
[í•ň,Å,·Bfvf
%ofCfx[fgftfH[f}fbfg,íŽg,!,Ü,¹ňB,Ü,^{1/2}fffBfĚfCfhfĚf“f_fŠf“fO,àfTf|
[fg,μ,Ä,č,Ü,¹ň,ì,ÅAf[f,fŠ,ì,È,č•ú,í,²^Ó%º,³,čB

,f,u,Å,ífNfŠfbfvf{[fh,Ö,lfRfs[[^fy[fXfg,íA,c,h,aĚ`Ž®,Å[s,í,ê,Ü,·BMS-
Windows,É•W[€,lfyfC“fgfuf%ofV,Å,ífy[fXfg[o—^,Ü,¹ňB

fvf%ofCfx[]fgftfH[]f}fbfg

,f,u,Å,ÍfTf|[]fg,μ,Ä,ç,Ü,¹,ñ[]B
fNfŠfbfvf{[]fh,É,Í[]AfAvfŠfP[]fVf#f“CEÅ—L,ìCE`Ž® ,đ“o~^ ,; ,é<@“\,ª , ,è[]A,» ,
ìCE`Ž® ,đfvf%ofCfx[]fgftfH[]f}fbfg,ÆCE¾,ç,Ü,·[]B,±,ê,ªfTf|[]fg,³,é,é,Æ
%o½,ªŠđ,μ,ç,©,Å,·,ª[]ACE»[]Ý,ì,f,u,đ,Q,Â<N“® ,μ,Ä,Ý,Ä
%oº,³,ç[]B•Đ•û,Å,l,` ,fCE`Ž®,ì
%oæ'œ,đf|[]fVf“ ,μ,Ü,·[]Bf}fVf“ ,đ[]Ý'è ,; ,é,Æ[]F,ª[]³,μ,•\Ž|,³,ê,Ü,·,Ë[]B,±
,ê,đ[]u•jŽÊ[]v,μ,Ä¼,ì,f,u,Ö[]u“\,è•t,`[]v,ÄCE©,Ü,μ,â,æ[]B,±
,ñ,ç,Í[]Af}fVf“ ,đ[]Ý'è,μ,Ä,à[]F,ª•ï,í,è,Ü,¹,ñ,Å,μ,½,Ë[]H,Â,Ü,è,l,` ,fCE`Ž®,Í“]’—
,³,é,È,©,Á,½,ì,Å,·[]B,à,Æ,à,Æ,v,%o,Ž,,,,[],—
,“ ,É,Í,l,` ,fCE`Ž®,Í“FŽ` ,Å,« ,Ü,¹,ñ,©,ç[]A,±,æ,ç,Á,½,à,ì,đ“]’— ,; ,é,É,ÍfVf
%ofCfx[]fgftfH[]f}fbfg,Æ,μ,Ä“o~^ ,; ,é•K—v,ª , ,é,ì,Å,·[]B
[]iCEã,l,` ,f[]ê—p,ÌfyfCf“fgfc[]f<,È,ñ,©,ª[]o,½,Æ,«—~ ,μ,ç<@“\
,Å,·,Ë[]Bfvf[]fof%of€,à'â•ï,Å,·,©,ç[]A<C'· ,É'Ò,ç,Ü,μ,â,æ[]B

[ffBfU](#)

À,ç,ê,½,F",Å'tŠÔ,F,ð•\CE»,·,é,½,ß,ìŽè-@,ì,Ð,Æ,Â□B,½,Æ,!,îfsf"fN,ð•\CE»,·,é,ì,Éf}f[f"f^,Æ"" ,ì` fFfX-Í—l,ð□ì,Á,Ä•\CE»,μ,Ü,·□B

fpfCEfbfgî•ñ

fpfCEfbfgî•ñ,Æ,íA,Ç,ìF,^a,Ç,ìF,Éf}fbfv,³,ê,Ä,ç
,é,©,ďŽ!,·,à,ì,ÅAfpfCEfbfgf}fI[fWff,É,æ,Á,Ä—~—
p,³,ê,é,à,ì,Å,·BfAfvfŠfP[fVf†f“,í,»,ê,¼,ê•ÊÊÂ,É~_—
fpfCEfbfg,đì¬¬A•ÛŽ,μA•;ŽÊ,μ,½,è“\,è•t,¬,½,è,·,é,±,Æ,^a,Å,«,Ü,·B
,¬,ê,Ç'Êí,ì,X,W,Å,ÍTf[f³,ê,Ä,ç,È,ç,ì,ÅAŽ,,É,í-³%o,ì<@“\
,Å,·B,¿,á,ñ,Æf}fjf...fAf<,É',ç
,Æ,¬Ii, m,d,bj,X,W,ìfn[fhfEjFfA,É,æ,éfpfCEfbfg<@“\,Æ,í•Ê,ì^Ó-
j,Å,·,ì,ÅA¬¬—,μ,È,ç,æ,α,É,μ,Ä%o^o,³,çB

[fpfCEfbfg<@”\](#)

•\Ž|‰Ŧ”\,È□F□” ,æ,èŽÀŦ»‰Ŧ”\,È□F□” ,ª□,È,ç
,Æ,«□A,» ,ì’I,Ñ•û,ð□Ý’è,·,é<@□\,ðfpfCEfbfg<@”\,ÆŦÄ,Ñ,Û,·□B,v,‰,Ž,,□,—
,” ,Á,Í,R□D,O,©,çfTf|□[fg,³,ê,Û,μ,½,ª□Afm□[f}f<,X,W,Á,ÍfTf|
□[fg,³,ê,Û,¹,ñ,Á,μ,½□B
,©,½,â,â,X,W,É,Í□ì,©,çfpfCEfbfg<@”\,ðfTf|□[fg,·,éfn□[fhfEfffA,ª” ò,¡,Ä, ,è□A
ŠŽí,ìfAfvfŠfP□[fvf#f” ,ª,±,ê,ð—~—p,μ,Ä,¨,è,Û,μ,½□B,Æ,±
,ë,ª□ã□q,ì□ó<μ,©,ç,v,‰,Ž,,□,—,“fAfvfŠ,Í,±,ê,ð—~—p,Á,« ,È,-
,È,Á,Ä,μ,Û,Á,½,ì,Á,·□B
,v,‰,Ž,,□,—,“ ,É,Í<@Ží^È’¶□« ,ð
‰Ŧñ” ð,·,é^×□A’¼□Úfn□[fh,ÉfAfNfZfX,μ,Ä,Í,È,ç,È,ç,ÆŦ¾,æ“S,ì□,ª ,è,Û,·□B,f,
u,Í, ,¡,Ä,±,ê,ð”j,è,Û,μ,½□B,f,u,Í, ,é^Ó-¡,Á,Æ,Ä,à□s<V,ì^« ,çf\ftfg,Á,·,ª□A,» ,ìŽÀ
—p“l,È‰ž’l,Í,Íâ•Íâ,« ,È^Ó<` ,ì, ,é,à,ì,¾,ÆŽv,ç,Û,·□B□i,æ,ç,μ,â□A,æ,ç
,μ,â□B□O□O□G□j

fffBfCefCfhfCef“f_fŠf“fo

,f,u,Å,ÍfTf|□[fg,μ,Ä,ç,Ü,¹,ñ□B
frfbfgf}fbfv,ì,æ,æ,È‘å,«,Èff□[f^,Íf□f,fŠ,ðŽg,æ,ì,Å□AŽg,ç,à,μ,È,ç
,ì,ÉfNfŠfbfvf{□[fh,É“ü,ê,Ä,“,„ÆfvfXfef€,ì, ,μ,©,¹,É,È,Á,Ä,μ,Ü,ç,Ü,·□B,»,±
,Å□AfNfŠfbfvf{□[fh,É,Í□AfffBfCefCfhfCef“f_fŠf“fo,ÆCE³/₄,æ@“\,^a, ,è,Ü,·□B
fNfŠfbfvf{□[fh,É,Í“]’—□€”ö,^a□®,Á,¹/₂,±,Æ,³/₄,~“` ,|,Ü,·□B<â□s□U□ž,ì<—^—
³/₄□×,Ý,¹/₂,ç,È,à,ñ,Å,·,È□B,»,μ,Ä¹/₄,ìfAfvfŠfP□[fvf#f“ ,^a,Ü,³,É“\,è•t,~ ,æ,æ
,Æ,μ,¹/₂,Æ,«,É□%o,β,ÄŽÀ□Û,ìff□[f^,ð“]’—,·,é,ì,Å,·□B,ç
,í,ä,é□uCE»<à,ì^ø,«□o,μ□v,Å,·,È□B
f□f,fŠ,ì□,È,çŽ,,,Æ,μ,Ä,Í□A,Æ,Ñ,¹/₂,³,ñ,ìŠ^—ô,ÉŠú‘Ò,μ,¹/₂,ç,Æ,±
,ë,Å,·,^a□Afvf□fOf%of€,·,é,ì,à‘å•Ī,Å,·,©,ç□A<C’·,É‘Ò,ç,Ü,μ,å,æ□B

fAfXfyfNfg"ä

%æ-Ê,Æ□c,Æ%oj,ì"ä,ì,±,Æ□B—á,!,î•□'Ê,ì%Æ'ë—p,s,u,Å,Í,S□F,R,Å, ,è□Af
nfCfrfWf†f“,Å,Í,P,U□F,X,Æ,È,è,Ü,·□BfAfXfyfNfg"ä,ì^á,æfffBfXfvfÆfC,Åfrfbfgf}f
bfv,đ^μ,α,Æ,«,Í□Afrfbfgf}fbfvŽ©'ì,É□L□k,·,é“™,ì•ï□X,đŽ{,³,È,-
,Ä,Í,È,ç,È,è,Ü,¹,ñ□B,Å,à,»,α,·,é,ÆŠG,afMfUfMfU,É,È,Á,Ä,μ,Ü,α
,ñ,Å,·,È□AŽc"O,È,±,Æ,É□B

fmf“fvfŠfGf“fvfefBfu

f}f<f`f^fXfN,É,¨,¯,éŽÀ□sCE`´Ô,ì,Đ,Æ,Â□BŠefAfvfŠfP□[fvf†f“ ,ª□\$CEä,ð-
β,μ,Ä,,é,é,Ü,Å,v,%o,Ž,,,□,—,“ ,ª□\$CEä,ðŽæ,è-β,¹,È,ç
,½,β□A´·,çŠÔ,b,o,t,ð“Æ□è,·,éfAfvfŠ,ª, ,é,Æ□A^¼,lfAfvfŠ,ª“ ®,©,È,,È,è,Ü,·□B
fGf“fnf“fXf,□[fh,ì,c,n,r{fbfNfX,ÉŠÖ,μ,Ä,lfvfŠfGf“fvfefBfu,ÈCE`´Ô,ÅŽÀ□s,ª□s
,í,ê,é^×□A,» ,κ,ç,Á,½□S”z,í, ,è,Ü,¹,ñ□B
fmf“fvfŠfGf“fvfefBfu,ð□l—¶,μ,½ŠÂ«« ,É—D,μ,çfvf□fOf%of€ ,ª—
□‘z,Å,·,ª□AŽÀ□Û,É,Í,¨,μ,Á,±,ð“r†,Å%o½“x,àŽ~,β,é,æ,κ,Èfvf□fOf%of€
,ð,μ,È,¯,ê,î,È,ç,È,ç^×□A,È,©,È,©‘å•ï,È,ñ,Å,·,æ,È,¡□B

[%Šú%»ftf@fCf<](#)

,v,%Ž,,□,—,“,Å,í□A□Y'è,³,ê,½□î•ñ,đŽŸ%ñ,ì<N“®Žž,É—~—
p,·,é^×□AŠg'£Žq,^a*.ini,ì□%Šú%»ftf@fCf<,đfTf|□[fg,μ,Ü,·□B'Ê□í,±
,ê,íAfvfŠfP□[fvf#f“,ì<N“®Žž,É“Ç,Y□ž,Y□A□I—
¹Žž,É□X□V,·,é,à,ì,Å,·,^a□A,f,u,Å,íRf}}f“fh,Æ,μ,Ä□€”ö,³,ê,Ä,ç,Ü,·□B

.f,u,ì□%Šú%»ftf@fCf<,P

f_fCfif~fbfNff□[f^fGfNfXf`fFf“fW(,c,c,d)

f_fCfif~fbfNff□[f^fGfNfXf`fFf“fW(,c,c,d)
,Æ,Í□Aff□[f^,ð“@“l,ÉĎŠ·,·,é,½,β,ì,v,h,m,c,n,v,r,ì□fjffYf€,Å,·□B,±
,ê,É,æ,Á,ÄfAfvfŠfP□[fVf#f““~Žm,əfŠfAf<f^fCf€,Åff□[f^,ðĎŠ·,μ,½,è,·,é,±,Æ,ª
%oÂ“\,Å,·□B
,c,c,d,É,Í—,é‘α(fNf%ofCfAf“fg,Ü,½,ífffBfXfefBfI□[fVf#f“),ÆŽó,·,é‘α
(fT□[fo□[Ü,½,í□[fX),ª‘¶□Ý,μ,Ü,·□BĎ»□Ý,ì,f,u,íT□[fo□[,Æ,μ,Ä,ì<@“\,ðTf|
□[fg,μ,Ü,·□B,Â,Ü,è¼,ìvf□fOf%of€,ì—v<□,É,æ,Á,Äftf@fCf<,ðf□□[fh,μ,Ä·\
Ž|,·,é,±,Æ,ª□o—^,é-ó,Å,·□B
,à,μ’Ê□Mf\ftfg,ª,c,c,dNf%ofCfAf“fg,ì<@“\,ð”ð,|,Ä,ç,Ä,f,u—
p,ÉfjXf^f}fCfY□o—^,é,È,ç□A’Ê□Mf\ftfg,ÅŽó□M,μ,½ff□[f^,ð,½,¾,¿,É,f,u,É·\
Ž|,·,é,±,Æ,à%oÂ“\,Å,·□B

,c,c,dŽd—l

,f,u,ì□%Šú%»ftf@fCf<,P

,f,u,Å,í^È%Šú%,ì,æ,æ,Éf|fvfVf†f“ ,đŽw'è,·,é,±,Æ,ª□o—^,Ü,·□B

Machine={ PC98 | PC98N | PC98E.1 | PC98E.A | GA1024i | VGA |
Others }

Pager=<fy□[fWff,É—~—p,·,éfRf}f“fh-¼>

Format={ mag | mki | q4 | jpg | gif | pic | xbm | x | bmp | ALL }

Dithering={ ON | OFF }

Quantize={ ON | OFF }

QuantizePass={ 1Pass | 2Pass }

Color={ 16 | 256 }

CPU={ 286 | 386 }

AspectRatio=<50□`250,ì"í^í,ìfAfXfyfNfg"ä>

AutoAspect={ ON | OFF }

ZoomRate=<10□`999,ì"í^í,ìfY□[f€—|>

FixPalette={ ON | OFF }

□u,f,u,ì□%Šú%»ftf@fCf<,Q□v,Ö'±,...

.f,u,ì%Šú%»ftf@fCf<,Q

UpdateColor={ ON | OFF }
Language={ Japanese | English }
GaSwitch=<0`F,ì"í^í,ìGA1024i,ìŠ,,èž,Ý"Ô†>
WorkDirectory=<,f,u<N"®Žž,ìff[f^"Ç,Ýž,ÝfffBfÆfNfgfŠ-¼>
PushESCExit={ ON | OFF }
UseBMP={ ON | OFF }
ViewImage={ ON | OFF }
AutoLink={ ON | OFF }
OpenDocument={ ON | OFF }
AddFileList={ ON | OFF }
DisplInterval=<0`30•b,ì"í^í,ìŽ©"®•\Ž|ŠÔŠu>
PhotoCDSize={ Base/16 | Base/4 | Base }
SaveRLE={ ON | OFF }
SaveDPI=<ftf@fCf<fZ[fuŽž,ìDPI>
FileManDrag={ ON | OFF }

u,f,u,ì%Šú%»ftf@fCf<,Pv,Ö-ß,é...

,f,ufwf<fv

,±
,ì,f,ufwf<fv,íìžÒ,Æ,Ñ,½ž□,ì□³”F,đ“¾,Ä□A,x,t,h,o,n□Afpfl,³,ñ□A<y,ÑžRCE``’ăš
w,n,a,²□ì□¬,μ,½,à,ì,Å,·□Bžæ,è^μ,ç,É,¨,ç,Ä,í□A,f,u-{'ìfvf□fOf%of€,Æ□€
,¶,½,à,ì,Æ,μ,Ü,·□B□ó<μ^Ë’¶fwf<fv<y,Ñ%op•¶fwf<fv,ÍTf|
□[fg,μ,Ä,¨,è,Ü,¹,ñ□Bfwf<fv,ÉšÖ,·,é^ÓCE©“™,í□A,x,t,h,o,n,²□³,è,Ü,·□Bfwf<fv’t,ì
CEë,è□A, ,é,ç,í’Ç%oÁ,μ,Ä—~ ,μ,ç□î•ñ□A“™,Ç,μ,Ç,μ,x,t,h,o,n,ì•û,Ü,Å,²^ê•ñ
%o²,³,ç□B

,x,t,h,o,n



fpfl,³,ñ



žRCE``’ăšw,n,a



óμĚ'fwwfv

,f,u,Ā,ÍfTf|[]fg,μ,Ā,¨,è,Ü,¹,ñB
f[]fh,âfGfNfZf<,ĀfvftfgfL[][,đ%oÿ,μ,È,ª,ç,t[]E,PfL[][,đ%oÿ,μ,Ā,Ý,Ā,-
,¾,³,ç[]Bf}fEfXfj[]f<,ª[]u[]H[]v,đ,¨,ñ,Ô,μ,Ü,μ,½,Ě[]H,±,ì[]ó'Ô,Āf[]ffj...
[][,ìfRf}f"fh,đ'í,Ô,Æ[]A,»,ì<@"\,đŽÀ[]s,·,é,©,í,è,É,»,ì<@"\,ì[]à-¾,ª\
Ž,³,é,Ü,·[]B,±,é,ª[]óμĚ'fwwfv,Ā,·[]B
,±,é,đŽÀ[]»·,é,É,í[]Afvf[]fOf
%of}[][,Æfwwfv[][]¬ŽÒ,Æ[],"x,È~A[]gfvf[][][,ª•K—v,Ā,·[]BŠF,Ā,x,t,h,o,n,³,ñ,đ
%ož%o±,μ,Ü,μ,â,ꝛ[]B,ì[]AŽ,,[]HŽ,,,"í"p,đ,½,«,Ā,¯,Ā,ç,é,¾,¯,Ā,·[]B, []A,»,é[]A,ª,ñ,î
,é[]A,ª,ñ,î,é[]I

,æ,,é,p□•,`

Ž©—R,É“]□Ú,μ,Ä,à—Ç,ç,ì,Å,.,©□H

ŠG,đ%œ,,É,í□H

%œ'œ,ì~A'±•\Ž!,đ,^{3,1},é,É,í□H

'â,«,Èftf@fCf<,đ,³•\Ž!,³,é,Ü,¹,ñ,Å,μ,^{1/2}□I

,v,h,m,c,n,v,r,ì,ìfI□[fvfjf“fO%œ'œ,³•ì□X,Å,«,é□H

%œ'œftf@fCf<,³òŽR,^{1/2},Ü,Á,Ä,μ,Ü,Á,^{1/2},ì,Å,.,³□D□D□D

,f,u,ì,c,c,d<@“\,đŽg,Á,Ä,Ý,^{1/2},ç,ì,Å,.,³□D□D□D

□G,s,....',□,Æ,f,u,đ~A“®,^{3,1},é,É,í□H

,v,h,m,s,d,q,l,Æ,f,u,đ~A“®,^{3,1},é,É,í□H

,f,u,É,í,n,k,d,ì<@“\,í-³,ç,ì,Å,.,©□H

Ž©—R,É“]Ú,μ,Ä,à—Ç,ç,ì,Â,.,©H

,f,u,íftjŠ[f\ftfg,Å,·B],Á,ÄŽ©—R,É“]Ú,μ,Ä\,ç,Ü,¹,ñ,^aAŽg—
pã,ì^Ó“,É<L,³,ê,Ä,ç,éđĎ,đ...Žç,μ,Ä'Ö,,±,Æ,đŠó-],μ,Ü,·B



ŠG,đ%œ,,É,íH

,f,u,íŠz,É“ü,Á,½•xŽmŽR,ìŠG,ìfAfCfRf“,ª•\,μ,Ä,ç,é,æ,π,É□A%œ’œ•\Ž!□ê-
âf\ftfg,Å,·□B%œ’œ•\Ž!,ì“¹,đ<É,β,é,½,β,É(^^;;□“à,Å—¬’Ê,μ,Ä,ç,é’S,Ä,ì
%œ’œE`Ž®,É’î%ž,·,é,x,“ú-éŠJ”,É<î,μ,ñ,Å,“,è,Ü,·□B
□],ç,Ü,μ,Ä□A□½,ÉŽc”O,Å,·,ª□A,“ŠG,©,«,É,í•Ê“r`%œf\ftfg,đ,“Žg,ç
%œº,³,ç□B(^_^)V



,f,u,ì□u•Ò□W□{•;ŽÊ□vfRf}f“fh,Å
%œ’œ,đfNfŠfbfvf{□[fh,É•;ŽÊ,μ□A,v,h,m,c,n,v,r•t’®,ìfyfCf“fgfuf
%ofV,đ<N“®,μ,Ä“\,è•t,¯,ê,î□A,“ŠG•`,«,à^ó□ü,àŽ©—R,Å,·□BfyfCf“fgfuf
%ofV,àŽg,ç•û,É,æ,Á,¿,áfofj,É,È,ç,È,ç,æ□l



%œ'œ,î~A'±•\Ž!,đ,³,¹,é,É,íH

uf|fvfVf#f"v,ìu•\Ž!ff[f^v,É, ,éAAuto Load File,Å~A'±•\
Ž!,ì'Ò,žŽšŌ,đ'Y'èĀãAftf@fCf<Ef}f[fWff,©,ç•i"ftf@fCf<,đ'l'đ,μ,ÄAfhf
%ofbfO,μ,Û,·B'Ò,žŽšŌ,đ'·,-
Y'è,μ,½ê#f,íA,f,uã,Åf_fuf<fNfšfbfN,đ,·,ê,îAZŸ,ì%œ'œ,Éi,Y,Û,·B



,f,u,ì,c,c,d<@"\
,đŽg,!,îA•Ê,ÈfAfvfšfP[fVf#f",©,ç,f,u,đfRf"fgf[f<,μ,Å~A'±•\Ž!,³,¹,é,±,Æ,à
%oÂ"\,³/₄,æf



'á,«,Èftf@fCf<,đ,ª•\Ž!,³,ê,Ü,¹,ñ,Å,μ,½□I

“Ç,Ý□ž,ρ,Æ,«,Éf□fbfZ□[fW,ª□o,Ü,¹,ñ,Å,μ,½,©□Hf□f,fŠ•s'«,ì%oÂ"\□«,ª, ,è,Ü,·
□Bf□f,fŠ,đ" f,ç'«,: ,©□AfXf□fbfvftf@fCf<,ì□Ý'è,đ'á,«,μ,½Æã,ÉWindows
,đ□Ä<N“ ®,μ,Ä,,¾,³,ç□B



,¨<à,àfn□[fhfffBfXfN,ì—e—Ê,à-³,ç□I,Í,Ç,α,·,é,ñ,¾,ë,α...
...,» ,ê,íŽ,,Å,·□BfNfXf“□B



[,v,h,m,c,n,v,r,ì,ìfì\[\]fvfjf“fO%œ’œ,ª•ïX,Á,«,é\[\]H](#)

,P[]@<N“®%œ-Ê,ÉŽg,¸%œ’œ,ð[]€”ð,·,é[]B, ,Ü,è’â,«,Èftf@fCf<,¾,ÆWin,ª<
N“® ,µ,È,,È,é,ì,Á[]A,È,é,x,[]¬,³,ß,ì•” ,ð[]B

,Q[]@GV,Á“Ç,Ý[]ž,ň,Á•Û’¶,·,é[]B,»,ì[]Û,Éftf@fCf<f[]f€
,í[]uVGALOGO.RLE[]v,Æ,µ[]AWin,ìfvfXfef€[]EfffBfCefNfgfŠ,É•Û’¶,·,é[]B[]i•K—
v,Á, ,ê,î[]AŽ-’O,É€³,ìftf@fCf<,ð•Ê-¼,Á•ÛŠÇ,µ,Ä,“,,±
,Æ[]B[]jGV,ì[]V<K•Û’¶,ìfìfvfVf#f“ ,Á[]uRLE Compress[]v,ð’l,ň,Á,“ ,[]B

,R[]@Win,ð[]l—¹,µ[]ADOS,©,çWin,ìfffBfCefNfgfŠ,Á[]uSETUP[]v,ðŽÀ[]s,µ[]A
%œð’œ“x,ì’l’ð,ð,·,é[]B[]i€»[]Ý,ì,Û,Û,ì%œð’œ“x,ÁOK![]jfffBfXfN,ì—v<[],ª—
^,½,çWin,ìfvfXfef€[]EfffBfCefNfgfŠ,ðŽw’è,µ[]A•ïX,í[]s,í,, ,É[]l—¹,³,¹,é[]B

,S[]@[]Ä<N“® ,·,é,Æ,²Šó-],ìŠG,Á<N“® ,µ,Û,·[]B



[%œ'œftf@fCf<,ə'òŽR,½,Ü,Á,Ä,μ,Ü,Á,½,ì,À,.,əD□D□D](#)

,f,u,í•j□"◁N"® ,ə%oÂ"\,Á,·,©,ç□ACE©"ä,x,Ä,Ý,Ä,ç,ç,È,ç
,à,ì,í"K<X□í□œ,·,é,©□AfffBfÇfNfgfŠ,ðì,é,È,è,μ,ÄŠÇ—□,μ,Ä,-
,¾,¾,ç□B,f,u,ììŽÒ,Á, ,é□u,Æ,Ñ,½□vŽ□,í□A,±,ê,É,Â,ç,Ä□Á□I•ºŠí,ðŠJ""†,Æ,ç,æ
%o\,Á,·□B



Ž,,ə□ì,Á,½,w,k,g,` ,È,çftf@fCf<f}f□[fWff,Æ,f,u,ð~A"® ,¾,¾,é,±,Æ,ə%oÂ"\
,Á,·□B,Á,àŽ,,í,Æ,Ñ,½Ž□,Ù,çf}f□,¶,á,È,ç,ì,Á, ,ñ,Ü,èŠú'Ò,μ,È,ç,Á,È□B



,f,u,ì,c,c,d<@”\,đŽg,Á,Ä,Ý,½,ç,ì,Â,.,ª□D□D□D

,f,u,ì,c,c,d<@”\,đŽg,ᄡ,É,Í□A,c,c,d{Rf}f“fh,đ’—,é,±,Æ,ª□o—^,éf\
ftfgfEjFfA(,c,c,d{Nf%ofCfAf“fg),ª•K—v,Â,·□B,c,c,d<@”\
,í,v,h,m,c,n,v,r,ì,Đ,Æ,Â,ì’â,«,È-Ú<Ê,È,ì,Â,·,ª□AftfŠ□[f\ftfg,Â,±,ì<@”\,đfTf|
□[fg,μ,Ä,ç,é,à,ì,í, ,Ü,è☉Žó,¯,ç,ê,Ü,¹,ñ□BŽs”ì\ftfg,ì,l,r□|
,v,n,q,c(f□□[fvf□)□A,l,r□|,d,w,b,d,k(•\☉vŽZ)□A,l,r□|
,` ,b,b,d,r,r(ff□[f^fx□[fX)□A,v,h,m,s,d,q,l(’Ê□Mf\ftfg),È,Ç,Â,ÍfTf|□[fg,μ,Ä,ç
,Ü,·□B
“Á,É’Ê□Mf\ftfg,đ’g,Ý□‡,í,¹,½□ê□‡,É,Í□A’Ê□M’†,ÉŽ☉“®“l,É,f,u,É%œ’œ,đ•\
Ž|,³,¹,é,±,Æ,ª%oÂ”\,Â,·□B



,c,c,dŽd—l

G,s,...',,Æ,f,u,ð~A"®,³,¹,é,É,ÍH

fVfFfAfEfFfA G,s,...',(Version 2.X),É,Í,c,c,d<@"\,ì,æ,¿AfNf
%ofCfAf"fg(fffBfXfefBfI[fVf+f"),¾,~,ªTfI[fg,³,é,Ä,ç,Ü,·B—
á,ì,ÎAfXfNfŠfvfg,ÉŽŸ,ì,æ,æ,É<Lq,·,é,ÆA,f,u,É test.bmp ,ð·\
Ž,³,¹A,» ,ì,Æ,« ,ì,f,u,ì^É'u,ÆfTfCfY,ð·ì" #Rect ,É'ă"ü,·,é,±,Æ,ªo—^,Ü,·B—
D G,ÈfXfNfŠfvfg,ªftfŠ[fVftfg,Æ,µ,ÄEöŠJ,³,é,é,ì,ðŠú'Ò,µ,Ü,·B



```
ddeinitiate "GV", "System"  
if( no ) error "DDE,ÉŽ, "s,µ,Ü,µ,½B"  
ddeexecute "FileOpen(test.bmp)"  
dderequest "WindowRect", #Rect  
ddeterminate
```

'ÊM†ŽÓM,µ,È,ª,ç%œ'œ,ð·Ž!,·,éCE,Å,·,ªA'Êí,t,o,³,é,Ä,ç,é
%œ'œff[f^,Á,Ä^³k,³,é,Ä,ç,Ü,·,æ,ÈH,„ŽRCE`'ăŠw,n,a,³,ñ



,à,¿,ë,ñA,» ,æ,ç,æ%œ'œ,ð·Ž!,·,é,É,ÍA,±,ìfXfNfŠfvfg,ì'O,É%œ'œ,ð
%ð"€,·,éfXfNfŠfvfg,ð'Ç%Á,·,é•K—v,ª, ,è,Ü,·B,„fpfl,³,ñ



[,v,h,m,s,d,q,l,Æ,f,u,ð~A“® ,³,¹,é,É,Í□H](#)

“ú-{"d<CfRf"fsf...□[f^fVfXfef€Š"Ž®%oiŽĐ,ì,v,h,m,s,d,q,l(Version 2.0)
,É,Í,c,c,d<@"\,²fTf]□[fg,³,ê,Ä,ç,Ü,·□B—á,¡,Î□AfXfNfŠfvg,ÉŽŸ,ì,æ,α
,É<L□q,·,é,Æ□A,f,u,É test.bmp ,ð•\
Ž,³,¹□A,» ,ì,Æ,« ,ì,f,u,ì^É'u,ÆfTfCfY,ðfXf^□[•İ□"(—\—ñ•İ□") *ddedata
,É'ã"ü,·,é,±,Æ,²□o—^,Ü,·□B—D□G,ÈfXfNfŠfvg,²ftfŠ□[f\
ftfg,Æ,μ,ÄÆöŠJ,³,ê,é,ì,ðŠú'Ò,μ,Ü,·□B



```
execute "FileOpen("test.bmp")": "GV": "System"  
request "WindowRect": "GV": "System"
```


,f,u,É,í,n,k,d,ì<@”\,í-³,ç,ì,Á,·,©□H

Žc”O,È,ª,ç,n,k,d,ì<@”\,í, ,è,Ü,¹,ñ□B□],Á,ÄfŠf“fN“\,è•t,¯,â-
,,ß□ž,ÝfIfufWfFfNfg,ìì□¬,í□;ì,Æ,±,ë□o—^,Ü,¹,ñ□B,±,ê,ª□o—^,é,Æ,·,²,ç
,ñ,Á,·,ª,Ë□B



,c,c,dŽd—l

,f,u,í,c,c,dfT[]fo[]if[]fX[]j,Æ,μ,Ä"®[]ì,·,é,±,Æ,à%oÄ"\,Å,·[]B,±
,ê,É,æ,Á,Ä[]Aftf@fCf<f}f[]fWff,©,ç,f,u,đŠf,[]fgfRf"f[]f<,μ,½,è[]Af[]fvf[],
â•\CEvŽZ,Æ~A"®,³,¹,½,è,·,é,æ,α,È[]A,v,%o,Ž,,,,[],—," ,È,ç,Å,í,ì[],"x,È%ož—
p,žÀÆ»[]o—^,Ü,·[]B

,à,μ'É[]Mf\ftfg,³,c,c,dfNf%ofCfAf"f[]g,ì<@"\,đ"ö,|,Ä,ç,Ä,f,u—
p,ÉfjXf^f}fCfY[]o—^,é,È,ç[]A'É[]Mf\ftfg,ÅŽó[]M,μ,½ff[]f^,đ,½,¾,ç,É,f,u,É•\
Ž|,·,é,±,Æ,à%oÄ"\,Å,·[]B

,c,c,d,đŽg—p,·,é,Æ,«,í<N"®flfvfVf‡f",É,c,c,dflfvfVf‡f",đŽw'è,μ,Ä%o^o,³,ç[]B

,c,c,dfT[]fo,ìŽd—l

,c,c,d,lfT[]fo[][-¼

,c,c,d,lfgsfbfN-¼

,c,c,d,ìŽÀ[]sfRf}f"fh

,c,c,d,lfAfCfef€

,c,c,d,lfAfhfof^fCfY

,c,c,d,ì%ož—p—á

,c,c,dŽd—l,ì•ì[]X"

[,c,c,d,lfT\[\]fo\[\]\[-1/4](#)

,f,u,lfT[]fo[][-1/4,í GV ,Å,·B

[,c,c,dŽd—l](#)

,c,c,d,lfqfsbfN-¼

,c,c,d,lfqfsbfN-¼,Í System ,Å,·B%Šú
%»f[bfZ[fW,đuf[fhfLfffXfg,³,ê,½,Æ,«AGV | System ,É%ž“š,μ,Ü,·B

,c,c,dŽd—l

,c,c,d,ìŽÀ[]sfRf}f“fh

,f,u,í,c,c,d,ÅŽó,~Žæ,Á,½Žÿ,ìfRf}f“fh,É
%ž“š,μ,Ü,·[]B(*)^ó,í[]AŽRCE`'åŠw,n,a,Æ,ì<α“~[]ÝCEv,É,æ,Á,Ä[]Ý'è,³,ê,½,à,ì,È,ì
,Å[]A[]«—^“l,ÈŽd—l,ì•ì[]X,í”äŠr“l[],È,ç
,ÆŽv,í,ê,Ü,·[]B(**)^ó,í,f,u,O[]D,U,R,Å,íŽÀ'•,³,ê,Ä,ç,Ü,¹,ñ[]B

,c,c,d[]Fftf@fCf<,ðf[]fvf“(*)
,c,c,d[]FŠp“x,ðŽw'è,μ,Äftf@fCf<,ðf[]fvf“
,c,c,d[]FfEfBf“fhfE,ì^Ê'u,ðŽw'è(*)
,c,c,d[]F%œ'œ,ð[],'¬,É•\Ž!(*)(**)
,c,c,d[]F%œ'œ“Ç,Ý[]ž,Ý,ì't'f(*)(**)
,c,c,d[]F%œ'œ,ì“\,è•t,¬
,c,c,d[]FfNfHf“f^fCfY•û-@,ìŽw'è
,c,c,d[]FŠg'å—l,ðŽw'è
,c,c,d[]FfAfXfyfNfg”ä,ìŽw'è
,c,c,d[]F%ñ“]•ûCEü,ìŽw'è
,c,c,d[]F,f,u,ð[]l—¹,³,¹,é
,c,c,d[]F,f,u,ì•\Ž![]^”ñ•\Ž!,ð[]Ø,è'Ö,l,é
,c,c,d[]F,f,u,ðfAfCfRf“,É[]Ø,è'Ö,l,é

,c,c,dŽd—l

,c,c,d ftf@fCf<,đfI[fvf“ (FileOpen)

FileOpen(<ftf@fCf<-¼>)

ftf@fCf<-¼

•\Ž!,^{3,1},éftf@fCf<-¼

<@\FŽw'è,³,ê,½ftf@fCf<,đfI[fvf“,μA•\Ž!,·,éB
—ájFileOpen(B:\TEST.BMP)

,c,c,d,ìŽÀ[sfRf}f“fh

,c,c,d\FŠp“x,đŽw’è,μ,Äftf@fCf<,đfi□[fvf“(FileOpenEx)

FileOpenEx(<ftf@fCf<-¼>,<%oň“]ftf%ofO>)

ftf@fCf<-¼

•\Ž!,^{3,1},éftf@fCf<-¼

%oň“]ftf%ofO

L□F□¶%oň,è,X,O“x%oň“]

R□F%oE%oň,è,X,O“x%oň“]

,»^èÈŠO□F%oň“],μ,È,ϕ

<@“\□FŽw’è,^{3,è,½}ftf@fCf<,đ%oň“]ftf%ofO,ÄŽw’è,^{3,è,½}•ûÆü,É%oň“],μ,Ä•\
Ž!,·,é

,c,c,d,ìŽÀ□sfRf}f“fh

[,c,c,d,FfEfBf“fhfE,ì^Ê'u,ðŽw'è\(SetWindowPos\)](#)

SetWindowPos(<Zflag>,<XÀ•W>,<YÀ•W>,<•>,<,,³>,<ó'Ô>)

Zflag

-1FTOPMOST

1FBOTTOM

<XÀ•W>,<YÀ•W>,<•>,<,,³>

GV,ìV,μ,ϕ^Ê'u,ÆfTfCfY

ó'Ô

0Ffm[f]f<

1FfAfCfRf“%o»

2FÅ'å%o»

<@“\F,f,u,ì^Ê'uA<y,ÑfTfCfY,ð•ìX,·,é

—ájSetWindowPos(1,0,0,100,100,0)

[,c,c,d,ìŽÀ\[sfRf}f“fh](#)

,c,c,d□F%œ'œ,đ□,'¬,É•\Ž!(ViewDraft)

ViewDraft()

<@"\□F%œ'œfCf□□[fW,đ□,'¬,É•\Ž!,,:é
□!,Ü,³/₄ŽÀ'•,³,ê,Ä,φ,È,φ

,c,c,d,ìŽÀ□sfRf}f“fh

,c,c,d\F%œ'œ“Ç,Ýž,Ý,ì't'f(FileClose)

FileClose()

<@"\F%œ'œ“Ç,Ýž,Ý,ì't'f,·,é

ì,Û,¼ŽÀ'•,³,ê,Ä,ç,È,ç

,c,c,d,ìŽÀ\sfrf}f“fh

,c,c,d F%œ'œ,ì"\,è•t, (ClipPaste)

ClipPaste()

<@"\ FfNfŠfbfvf{ [fh,ìff [f^,đŽœ,èž,þ

,c,c,d,ìŽÀ [sfRf}f"fh

,c,c,d\FfNfHf“f^fCfY•û-@,lŽw’è(Quantize)

Quantize(<f,[fh>,<F”>,<Path>,<Dither>)

f,[fh

ON:Ā,F,đ,·,é

OFF:Ā,F,đ,μ,È,ϕ

AUTO:Ā,FĀ<%oÊ,đfffBfXfvfĀfCfhf%ofCfo,l”\—Í,É, ,í,¹,é

F”

8FĀ,FĀă,lF””,đ8F,É,·,é

16FĀ,FĀă,lF””,đ16F,É,·,é

256FĀ,FĀă,lF””,đ256F,É,·,é

Path

1:Ā,F•û-@,đ1Pass,É,·,é

2:Ā,F•û-@,đ2Pass,É,·,é

Dither

ON:Ā,FŽž,ÉfffBfU,đŽg,κ

OFF:Ā,FŽž,ÉfffBfU,đŽg,í,È,ϕ

<@”\F,f,u,lĀ,Ff|fv|vf|f“”,đŸ’è,·,é

,c,c,d,lŽÀ[sfRf}f“fh

,c,c,d FŠg'â—|,đŽw'è(ZoomRate)

ZoomRate(<Šg'â—|>)

Šg'â—|

Šg'â—|

<@"\ FŠg'â—|,đŽw'è,·,é BCE» Y,ì·\Ž! ó'Ô,à·ï X,·,é B

,c,c,d,ìŽÀ sfRf}f"fh

,c,c,d fAfXfyfNfg"ä,İŽw'è(Aspect)

Aspect(<fAfXfyfNfg"ä/-1>,<'²@f^fCfv:W/H/I/D/Other>)

fAfXfyfNfg"ä

fAfXfyfNfg"ä

-1F•İX,µ,È,ç

'²@f^fCfv

,v^,g^,h^,cF,»,ê,¼,ê,ÉÝ'è

,»,ê^ÈŠOF•İX,µ,È,ç

<@"\fAfXfyfNfg"ä,đŽw'è,·,éBCE»Ý,ì\Ž!ó'Ô,à•İX,·,éB

,c,c,d,İŽÀsfRf}f"fh

,c,c,d[F%oň"]•ûĚü,ìŽw'è(Rotate)

Rotate(<%oň"]•ûĚü:L/R>)

%oň"]•ûĚü

,k^,q[F,»,ê,¼,ê,ì•ûĚü,É%oň"]

<@"\F\Ž!,³,ê,Ä,ç,é%œ'œ,đ%oň"],μ,Ä•\Ž!,·,éB

,c,c,d,ìŽÀ[sfRf}f"fh

,c,c,d\F,f,u,đ|—¹,³,¹,é(ExitGV)

ExitGV()

<@\F,f,u,đ|—¹,·,éB

,c,c,d,ìŽÀ\sRf}f“fh

,c,c,d F,f,u,ì•\Ž;□^”ñ•\Ž;,\đ□Ø,è‘Ö,!,é(ShowGV)

ShowGV(<f,□[fh>)

f,□[fh

□@□@ON□F,f,u,đ•\Ž;□ó‘Ô,É,·,é

□@□@OFF□F,f,u,đ”ñ•\Ž;□ó‘Ô,É,·,é

<@”\□F,f,u,ì•\Ž;□E”ñ•\Ž;,\đ□Ø,è‘Ö,!,é

,c,c,d\F,f,u,đfAfCfRf“,ÉØ,è‘Ö,ı,é(IconGV)

IconGV(<f, [fh>)

f, [fh

@ON\F,f,u,đfAfCfRf“•\Ž!,É,ı,é

@OFF\F,f,u,đ‘Éı•\Ž!,É,ı,é

<@\F,f,u,đfAfCfRf“ó‘Ô,đØ,è‘Ö,ı,é

,c,c,d,ìŽÀ[sfRf}f“fh

.c,c,d,lfAfCfef€

CE»Ý,ìfo[fWf#f“,Å,íA^È%º,lfAfCfef€,ðTf|f[fg,µ,Û,·BfNf
%ofCfAf“fg(ffBfXfefBf|fVf#f“),íA,±,ìff[f^,ðfŠfNfGfXfg,·,é,±,Æ,Å,f,u,ì\
Ž,ìó’Ô,ð’m,é,±,Æ,ºo—^,Û,·B

.c,c,d[FfEfBf“fhfE<éCE`,ìŽæ“¾

.c,c,d[F,c,h,afŠfNfGfXfg,ì<-ºoÂ

.c,c,d[F•Ž!‘t,ìºoæ’œ,c,h,a,ìŽæ“¾

.c,c,dŽd—l

,c,c,d□FfEfBf“fhfE<éCE` ,iŽæ“³/₄(WindowRect)

fAfCfef€ : WindowRect

•Ô“šff□[f^□FCF_TEXT

<X□À•W>,<Y□À•W>,<•□>,<□,,³>,<□ó'Ô:0,1,2>

,c,c,d,l̄fAfCfef€

,c,c,d F,c,h,afŠfNfGfXfg,ì<-‰oÂ(DIBRequest)

fAfCfef€ : DIBRequest

•Ô“šff[f^FCF_TEXT

ON :fŠfNfGfXfgDIB,ð'—,Á,Ä,à,ç,ç

OFF:œ»Ÿ•Ž|'†,ì,½,ßfŠfNfGfXfgDIB,ð'—,Á,Ä,í,¾,ß

,c,c,d,lfAfCfef€

,c,c,d\F•\Ž!'t,ì%œ'œ,c,h,a,ìŽæ“¾(DIB)

fAfCfef€ : DIB

•Ô“šff[f^FCF_DIB

•\Ž!'t,ì%œ'œff[f^

,c,c,d,ìfAfCfef€

.c,c,d,lfAfhfof^fCfY

,f,u,ífEfBf“fhfE,ì^Ê'u,âfTfCfY,ª•ïX,³,ê,½,Æ,«AŽŸ,ì€-Ú,đfNf
%ofCfAf“fg(fffBfXfefBfI[fVf‡f“),Ö'Ê'B,μ,Û,·B

fEfBf“fhfE^Ê'u^Ú”®
fEfBf“fhfEfTfCfY•ïX
'—Mff[f^FCF_TEXT
<XÀ•W>,<YÀ•W>,<•>,<,,³>,<ó'Ô:0,1,2>

.c,c,dŽd—l

,c,c,d,ì%ž—p—á

—á,!,îAŽRĚ`'šw,n,aîî-,ì,w,k,g,` Version 0.2
^Èã,đftf@fCf<f}fî[fWff,É'g,Ýž,ň,Å,Ý,Ä%º,³,čBftf@fCf<f}fî[fWff,Åfj[f\
f<,đ"® ,© ,·,¾, -,Å,f,u,ì%œ'œ,đŽŸX,ÆØ,è'Ö,!,Ä•Ž!,µ,Ä,ä,,±,Æ,º%Â\
,Å,·B
,Ü,½,Æ,Ñ,½Ž,í,f,u,ì,c,c,d<@"\,đftf<,ÉŽg,Á,½fNf
%ofCfAf"fgfAfvfŠfP[fVf†f",đîî- 't,ì-í-l,Å,·B

,c,c,dŽd—l

,c,c,dŽd—l,ì•ïX“_

,c,c,d,í,f,u,ìfo[fWf#f“,O□D,U,R,Å,í,¶,ß,ÄfTf|□[fg,³,ê,Ü,μ,¹/₂□B□
,Á,Ä^È‘O,ìfo[fWf#f“,Æ,ì•ïX“_ ,í, ,è,Ü,¹,ň□B

,c,c,dŽd—l

,Æ,Ñ,½

□³'ì•s-¾,lfTf“ff□[fvf□fOf%of}□BŽâ,ÉNIFTY,É□¶'§□B□o-
v□ê□Š,ÍFWINMM,âFGALAV,ì,±,Æ,¾½,ç□B,b,f,đŽâ,È□H—¿,Æ,μ□A
%oa•t,¯,μ,â,·,□l,ÉŠμ,ê,â,·,ç□B

Æ»□Ý,í,X,W,ÅWindows,đŽg,Á,Ä,ç,é,¾□A-§,©,ÉÆÝŠ·<@□w“ü,đ□l,!,Ä,ç
,é,ç,μ,ç□B

Nifty ID : PBC02026

,x,t,h,o,n

Žã,É,o,b|,u,`,mF,r,h,fu'm“lŹY
%öi<c v,ÉŹ‘\$B,½,Ü,É,v,h,m,c,n,v,r@,r,h,f,É,ào-
v,µ,Ü,·BCEÝŠ·<@·,X,Wft[fU[,ÅAÅ<ßfLfffvf`ff[fj[fh,ðw“üA,α,Ü,-
“® , © , È , ç , ½ , ß Ž l < ê ” ð < ê , µ , Ä , ç , Ü , · B

fnf“fhf<-¼u,x,t,h,o,nv,ì—R—^,Å, ,éœ<^ßi'·—j,í,à,α,Sî,É,È,èA—c't
%o€ , ì ” N ’ t , ³ , ñ , É , È , è , Ü , µ , ½ B , j , h , c , o , h , w A , l , n , s , g , d , q @ , f , n , n , r , d , É - ² ’ t , Å , · B

PC-VAN ID : BRM01050

NIFTY ID : QFH02076

ŽRĚ`'áŠw,n,a

Ě»Ÿ,r,h,f[u%»Šw,ÆfRf“fsf...[f^v,lf\ftfgšJ”Žº,ì<c’·,ð,â,Á,Ä,ç,Ü,·B
,f,u,ì,c,c,dŽd—lô’è,ìu,ç,ç
,¾,µ,Á,Øv,ÍŽ,,,¾,Á,½,ì,Â,·,ª[A,Æ,Ñ,½Ž,í,»è,É,Æ,Ç,Ü,ç,`A,¾,ç,È,é”“W,ð,¾,
è,Ä,“,ç,è,é,æ,æ,Â,·B



ŽRĚ`Ěš•Ä’òŽsŸZ
(•Ä’ò<ð’m,Á,Ä,ç,Ü,·,©H)

-{-¼ : —š%Ô~aG
<î-±æ : ŽRĚ`'áŠwHŠw•”
PC-VAN ID : MHD26706
NIFTY ID: PDD02274

fpfl,¾,ň

“ä,lfAfvfšEft[fU[[]ž©[](^_^;;[]AŽž[X,o,b[]
,u,`,m,ì,r,h,f[u’m“lôî•ň[]ŽYv,ì%oì<cžºu,v,h,mš^—p[v<y,Ñ[u]fn[]fhš^—
p[v,É[]’,<[]ž,ň,Á,ç,Ü,·B,±,lfwf<fv,lfrfbfgf}fbfv,íV[]¥—
·[]s,ì[]€”õ’t,É[]ì[]¬,µ,Ü,µ,½B
,»è,É^è•”,Á—L-¼,È[]u,e,a,’[],—,“,...
,’[]v[]i”’àV,¾,ň[]NIFTY:PBB00553[]j,ì[]\$[]žž,Éf[r]b[f]g[f]b[f]v[]EfffUfCf”,ð,“žè”,ç
,µ,½,±,Æ,ª,è,Ü,·B
Ě»Ÿ,í,u,a,Á,v,h,mfAfvfš,ì×<t,Â,·B’[],šF—l,ì,“-ð,É—š,Ä,é,æ,æ
,È[]ì·i,ð[]è,½,ç,à,ì,Â,·B

PC-VAN ID : HKM62718
NIFTY ID: GBA02152

[fwf<fv\[\]-\[\]i•ñ](#)

MakingOfHelp

,±,lfwf<fv,í[]A“ú- {CEê,l,r[],v,n,q,cfo[] [fWf#f“,T[]D,O<y,Ñ,l,r[],v,h,m,c,n,v,r[]
,r,c,j,R[]D,P,É,æ,Á,Ä[]-³,ê,Ä,“,è,Ü,·[]B

Windows ,lfL[‘€̀ì

^È%º,lfL[f{[fh‘€̀ì,ÉŠÖ,·,éfgfsfbfN,Í Windows ,lfwf<fv,Æ,μ,Ä“Y•t,³,ê,Ä,ç
é,à,ì,ð,».,ì,Ü,ÜŽg,Á,Ä,ç,Ü,·B,±,ì,æ,α
,ÈfL[f{[fh‘€̀ì,ÉŠÖ,·,éfgfsfbfN,ðfAfvfŠfP[fvf#f“,É“Y•t,·,é,±
,Æ,^a,Ä,«.,Ü,·DWindows ,Ä,ÍA%º<L,ì,æ,α,ÈfL[‘€̀ì,ðs,α,±,Æ,^a,Ä,«.,Ü,·D
f[f<^Ú“®.,ÉŠÖ,·,éL[‘€̀ì
f_fCfAfO f{fbfNfX,ÉŠÖ,·,éL[‘€̀ì
•Ow,ÉŠÖ,·,éL[‘€̀ì
fwf<fv,ÉŠÖ,·,éL[‘€̀ì
fif....,ÉŠÖ,·,éL[‘€̀ì
fVxfef€,ÉŠÖ,·,éL[‘€̀ì
fefLxfg‘l‘đ,ÉŠÖ,·,éL[‘€̀ì
fEfBf“fhfE,ÉŠÖ,·,éL[‘€̀ì

fj [f]f<^Ú“® ,ÉŠÖ,.,éfL [‘€]i
 fefLfXfg f{fbfNfX,â'¼,lfefLfXfg“ü—í,ð,.,éêŠ,Å,íCŽŸ,lfL[,ðŽg,Á,Äf [f\

fL [{“üf fCf“f^,ì^Ú“®
[]^²	1sã
[]«	1s%º
[]”	1•ŸŽš%ºE
[]©	1•ŸŽš
[CTRL]+[]”	1’PĚê%ºE(%op•Ÿ,ìê‡,ì,Ý)
[CTRL]+[]©	1’PĚê%ºE(%op•Ÿ,ìê‡,ì,Ý)
[HOME/CLR]	s,ìæ“ ^a
[HELP]	s,ìĀĚã
[ROLL DOWN]	1%ºæ-Ěã
[ROLL UP]	1%ºæ-Ě%ºº
[CTRL]+[HOME/CLR]	•Ÿ’,ìæ“ ^a
[CTRL]+[HELP]	•Ÿ’,ìĀĚã

f_fCfAf_fO f{fbfNfX,ÉŠÖ,·,éfL□[‘€̀ì
f_fCfAf_fO f{fbfNfX“à,À,ÍŽŸ,lfL□[,đŽg,č,Ü,·□D

fL□[
[TAB]

<@”\

flfvfVf#f“, ©,çflfvfVf#f“,É^Ú“® ,μ,Ü,·(□¶,©,ç
%oE□C□ã,©,ç%oo°)□D

[SHIFT]+[TAB]
[GRPH]+·¶ŽšfL□[

flfvfVf#f“, ©,çflfvfVf#f“,É<t·ûœü,É^Ú“® ,μ,Ü,·□D
%oo°□ü·t,«,ì·¶Žš,ª“ü—
Í,μ,½·¶Žš,Æ^ê‘v,·,éflfvfVf#f“,âfOf<□[fv,É^Ú“® ,μ,
Ü,·□D

·ûœüfL□[

flfvfVf#f“,lfOf<□[fv“à,Å□C‘I‘đf□[fA
f<,đflfvfVf#f“, ©,çflfvfVf#f“,É^Ú“® ,μ,Ü,·□D,Ü,½,Í□
CfŠfXfg f{fbfNfX,âfefLfXfg f{fbfNfX“à,Å□Cf□[fA
f<,đ□ã%oo°□¶%oE,É^Ú“® ,μ,Ü,·□D

[HOME/CLR]

fŠfXfg f{fbfNfX,âfefLfXfg
f{fbfNfX“à,ì□æ“ª,ì□€-
Ú,Ü,½,Í·¶Žš,É^Ú“® ,μ,Ü,·□D

[HELP]

fŠfXfg f{fbfNfX,âfefLfXfg
f{fbfNfX“à,ì□Åœã,ì□€-
Ú,Ü,½,Í·¶Žš,É^Ú“® ,μ,Ü,·□D

[ROLL UP]

fŠfXfg f{fbfNfX,Å1%ooæ-Ê‘P^Ê,ÉfXfNf□□[f<
f_fEf“,μ,Ü,·□D

[ROLL DOWN]

fŠfXfg f{fbfNfX,Å1%ooæ-Ê‘P^Ê,ÉfXfNf□□[f<
fAfbfv,μ,Ü,·□D

[GRPH]+[□<]

fhf□fbfvf_fEf“ fŠfXfg
f{fbfNfX,đfì□[fvf“,μ,Ü,·□D

[GRPH]+[□ª],Ü,½,Í[□<]

fhf□fbfvf_fEf“ fŠfXfg f{fbfNfX,ì□€-
Ú,đ‘I‘đ,μ,Ü,·□D

fXfy□[fXfL□[

fŠfXfg f{fbfNfX,Å□€-
Ú,đ‘I‘đ,μ,½,è□C‘I‘đ,đŽæ,è□Á,μ,Ü,·□D
f_ffbfN f{fbfNfX,đ‘I‘đ,Ü,½,ÍfNfŠfA,μ,Ü,·□D

[CTRL]+fXf%ofbfvf...(/) fŠfXfg f{fbfNfX,ì,·,x,Ä,ì□€-Ú,đ‘I‘đ,μ,Ü,·□D

[CTRL]+[\\]

œ»□Ý,ì□€-Ú,đ□œ,-
·,·,x,Ä,ì‘I‘đ,đŽæ,è□Á,μ,Ü,·□D

[SHIFT]+·ûœüfL□[

fefLfXfg f{fbfNfX“à,ì‘I‘đ”í^í,đŠg’£,μ,Ü,·□D

[SHIFT]+[HOME/CLR] fefLfXfg f{fbfNfX“à,ì‘I‘đ”í^í,đ□æ“ª,ì·¶Žš,Ü,ÅŠg’£
,μ,Ü,·□D

[SHIFT]+[HELP]

fefLfXfg
f{fbfNfX“à,ì‘I‘đ”í^í,đ□Åœã,ì·¶Žš,Ü,ÅŠg’£
,μ,Ü,·□D

fŠf^□[f“fL□[

fRf}f“fh f{f^f“,đŽÀ□s,μ,Ü,·□D,Ü,½,Í□CfŠfXfg
f{fbfNfX“à,ì□€-
Ú,đ‘I‘đ,μ,Ä□CfRf}f“fh,đŽÀ□s,μ,Ü,·□D

[ESC],Ü,½,Í[GRPH]+[f#4]

fRf}f“fh,đ‘t‘f,μ,Ä□Cf_fCfAf_fO
f{fbfNfX,đfNf□□[fY,μ,Ü,·(【Zæ□A】f{f^f“,Æ“~—
l)□D

• ÕW, ÉŠÖ, ., éfL [‘€ì

fefLfXfg, ð • ÕW, ., é, Æ, «, ÍŽŸ, ìfL [, ðŽg, ç, Ü, . D

fL [[BS]

<@”\ ‘}“üf|

[DEL]

fCf“f^ , ì [, ì • ¶Žš, ð [í [œ, µ, Ü, . D, Ü, ½, í [C ‘I’ ð, µ, ½ fefLfXfg, ð [í [œ, µ, Ü, . D ‘}“üf|fCf“f^ , ì %oE, ì • ¶Žš, ð [í [œ, µ, Ü, . D, Ü, ½, í [C ‘I’ ð, µ, ½ fefLfXfg, ð [í [œ, µ, Ü, . D

[SHIFT]+[DEL]

‘I’ ð, µ, ½ fefLfXfg, ð [í [œ, µ, Ä [C fNfŠfbfvf { [[fh, É ^ Ú, µ, Ü, . D

[SHIFT]+[INS]

fNfŠfbfvf { [[fh, ì fefLfXfg, ð fAfNfefBfu fEfBf“fhfE, É ‘}“ü, µ, Ü, . D

[CTRL]+[INS]

‘I’ ð, µ, ½ fefLfXfg, ð • ; ŽÊ, µ, Ä [C fNfŠfbfvf { [[fh, É ^ Ú, µ, Ü, . D

[GRPH]+[BS]

¼ ‘O, ì • ÕW ‘€ì , ðŽæ, è [Á, µ, Ü, . D

fwf<fv,ÉŠÖ,·,éfL□['€□ì

fwf<fv,ǎŽQ□Æ,·,é,Æ,«,ÍŽŸ,ìfL□[,ǎŽg,ç,Ü,·□D

fL□[
[f¥1]

<@”\

fAfvfŠfP□[fVf†f“ ,ìfwf<fv,ǎ’T,μ,Ä□Cfwf<fv,ì□ǎ^ø,ǎ•\
Ž!,μ,Ü,·□D,·,Å,Éfwf<fv fEfBf“fhfE,ǎfI□[fVf“ ,μ,Ä,ç
,é,Æ,«,É[f¥1]fL□[,ǎ%Ÿ,·,Æ□Cfwf<fv,ìŽg,ç•û,ì□ǎ^ø,ǎ•\
Ž!,μ,Ü,·□DWindowsfAfvfŠfP□[fVf†f“ ,ì’t,É,í□C[f¥1]fL□[,
ǎ%Ÿ,·,Æ□C‘ì’ǎ,μ,½fRf}f“fh□Cf_fCfAf□fO f{fbfNfX
f|fvfVf†f“□CfVfXfef€ f□fbfZ□[fW,È,Ç,ÉŠÖ,·,éfwf<fv□€-
Ú,ǎ•\Ž!,·,é,à,ì,^a, ,è,Ü,·□D

[SHIFT]+[f¥1]

f|fCf“f^,ǎ?(<^ -â•, ,),É•ì,í,è□C“Á’è,ìfRf}f“fh□C%œ-Ê—
ì^æ□CfL□['€□ì,ÉŠÖ,·,éfwf<fv,ǎŽQ□Æ,Å,« ,é,æ,π
,É,È,è,Ü,·□D,±,ì□ó’Ô,Å□CfRf}f“fh,ǎ‘ì’ǎ,μ,½,è□C%œ-
Ê,ì, ,é—ì^æ,ǎfNfŠfbfN,μ,½,è□C“Á’è,ìfL□[,ǎ
%Ÿ,μ,Ä□C,» ,è,ç,É,Å,ç,Ä□Ú,μ,’m,é,±,Æ,^a,Å,« ,Ü,·□D,±
,ì<@”\,í□C“Á’è,ìWindowsfAfvfŠfP□[fVf†f“ ,¾, ,^aŽ□,Á,Ä,ç
,é,à,ì,Å,·□D

f f f f ... [, É Š Ő , , é f L [' € ì

f f f f ... [, â f R f } f " f h , ð ' l ' ð , , é , Æ , « , í ž Ÿ , ì f L [, ð ž g , ç , Ü , · □ D

f L [

[GRPH] , Ü , ½ , í [f ¥ 10]

• ¶ ž š f L [

[©] , Ü , ½ , í ["]

[¢] , Ü , ½ , í [«]

f Š f ^ [f " f L [

[ESC]

< @ " \

f f f f ... [fo [[ã , ì æ " a f f f f ... [, ð ' l ' ð , μ , Ü , · □ D

% ° ü • t , « , ì • ¶ ž š , ¢ " ü — í , μ , ½ • ¶ ž š , Æ ^ ê ' v , , ; é f f f f ...

[, â f f f f ... [[€ - Ú , ð ' l ' ð , μ , Ü , · □ D

f f f f ... [Š Ő , ð ^ Ú " ® , μ , Ü , · □ D

f f f f ... [[€ - Ú Š Ő , ð ^ Ú " ® , μ , Ü , · □ D

' l ' ð , μ , ½ f f f f ... [[€ - Ú , ð ž Å [s , μ , Ü , · □ D

' l ' ð , μ , ½ f f f f ... [[C , Ü , ½ , í f f f f ... [[€ -

Ú , ð ž æ , è [A , μ , Ü , · □ D

fVfXfef€ ,ÉŠÖ ,. ,éfL ['€]

ŽÄ s,µ,Ä,ç,éfAfvfŠfP [fVf#f" ,É, ©, ©, í,ç, . □CŽŸ, ìfL [, í" C ^ Ó, ìfEfBf" fhfE, ÅŽg, x, ±, Æ, a, Å, «, Ü, . □D

fL [

<@" \

[CTRL]+[ESC] f^fXfN fŠfXfg,É□Ø,è'Ö,!,Ü, . □D

[GRPH]+[ESC] ŽŸ, ìfAfvfŠfP [fVf#f"

fEfBf" fhfE, Ü, ½, ìfAfCfRf" (ftf<fXfNfŠ [f" fvf□fOf%œf€ ,ðŠÜ, p),É□Ø,è'Ö,!,Ü, . □D

[GRPH]+[TAB] ŽŸ, ìfAfvfŠfP [fVf#f"

fEfBf" fhfE, É□Ø, è'Ö, !□CfAfCfRf" , ÅŽÄ s, µ, Ä, ç, éfAfvfŠfP [fVf#f" , í•œ€³, µ, Ü, . □D

[COPY]

%œ-Ê ã, ìfCf□□ [fW, ðfNfŠfbfvf {□ [fh, É• ; ŽÊ, µ, Ü, . □D

[GRPH]+[COPY] fAfNfefBfu

fEfBf" fhfE, ìfCf□□ [fW, ðfNfŠfbfvf {□ [fh, É• ; ŽÊ, µ, Ü, . □D

[GRPH]+[f¥4] fAfNfefBfu fAfvfŠfP [fVf#f"

fEfBf" fhfE, ðfNf□□ [fY, µ, Ü, . □D

[CTRL]+[f¥4]

fAfNfefBfu • ¶ □' fEfBf" fhfE, ðfNf□□ [fY, µ, Ü, . □D

[f¥1]

fAfvfŠfP [fVf#f" , ìfwf<fv, ð'T, µ, Å□Cfwf<fv, ì□ð^ø, ð• \ Ž!, µ, Ü, . (fwf<fv, ÉŠÖ ,. ,éfL ['€] , ðŽQ□Æ) □D

fefLfXfg 'I'đ,ÉŠÖ,·,éfL['€]

ŽŸ,ÉŽ|,·fL[,íC,Ü,Æ,ñ,Ç,ìWindowsfAfvfŠfP[fVf+f“ ,Å— ~ —

p,Å,«,Ü,·D,½,¾,μC,±,±,ÉŽ|,μ,½,ç, -

,Å,©,ìfL[,íCfefLfXfg,ª'I'đ,Å,«,éêÊŠ,Å,μ,©— ~ —

p,Å,«,Ü,¹,ñD“Á'è,ìfAfvfŠfP[fVf+f“ ,ìfL['€]ì,É,Å,ç

,Ä,íC,» ,ìfAfvfŠfP[fVf+f“ ,ìfwf<fv,É, ,éfL[f{ [fh,ì€-Ú,đŽQ[Æ,μ,Ä,,¾,¾,çD

fL[

<@”

[SHIFT]+[],Ü,½,í[]

fefLfXfg,đ[],Ü,½,í

%oE,É1•ŸŽš, ,Å'I'đ,μ,Ü,·D,Ü,½C,·,Å,É•Ÿ

Žš,ª'I'đ,³,ê,Ä,ç

,é,Æ,«,íC,» ,ê,đŽæ,èÁ,μ,Ü,·D

[SHIFT]+[],Ü,½,í[]

1[]s,Ü,½,í

%oº,ìfefLfXfg,đ'I'đ,μ,Ü,·D,Ü,½C,·,Å,É[]s,ª

'I'đ,³,ê,Ä,ç,é,Æ,«,íC,» ,ê,đŽæ,èÁ,μ,Ü,·D

[SHIFT]+[ROLL DOWN]

1%oæ-

Ê[]ã,ìfefLfXfg,đ'I'đ,μ,Ü,·D,Ü,½C,·,Å,É'Ö,ì

fEfBf“fhfE,ª'I'đ,³,ê,Ä,ç

,é,Æ,«,íC,» ,ê,đŽæ,èÁ,μ,Ü,·D

[SHIFT]+[ROLL UP]

1%oæ-Ê

%oº,ìfefLfXfg,đ'I'đ,μ,Ü,·D,Ü,½C,·,Å,É'Ö,ì

fEfBf“fhfE,ª'I'đ,³,ê,Ä,ç

,é,Æ,«,íC,» ,ê,đŽæ,èÁ,μ,Ü,·D

[SHIFT]+[HOME/CLR]

[]s,ì[]æ“ª,Ü,ÅfefLfXfg,đ'I'đ,μ,Ü,·D

[SHIFT]+[HELP]

[]s,ì[]ÅÆã,Ü,ÅfefLfXfg,đ'I'đ,μ,Ü,·D

[CTRL]+[SHIFT]+[]

'Ö,ì'PÆê,đ'I'đ,μ,Ü,·(%op•Ÿ,ì[]ê[]Ÿ,ì,Ý)D

[CTRL]+[SHIFT]+[]

ŽŸ,ì'PÆê,đ'I'đ,μ,Ü,·(%op•Ÿ,ì[]ê[]Ÿ,ì,Ý)D

[CTRL]+[SHIFT]+[HOME/CLR]

•Ÿ[]',ì[]æ“ª,Ü,ÅfefLfXfg,đ'I'đ,μ,Ü,·D

[CTRL]+[SHIFT]+[HELP]

•Ÿ[]',ì[]ÅÆã,Ü,ÅfefLfXfg,đ'I'đ,μ,Ü,·D

fEfBf"fhfE,ÉŠÖ,.,éfL□[‘€̀ì

fL□[

<@”\

[GRPH]+fXfy□[fXfL□[

fAfvfŠfP□[fVf†f“ fEfBf"fhfE,ìfRf"fgf□□[f< f□fjf...
□[,ðf□[fvf“ ,μ,Û,·□D

[GRPH]+[-]

•¶□‘fEfBf"fhfE,ìfRf"fgf□□[f< f□fjf...

□[,ðf□[fvf“ ,μ,Û,·□D

[GRPH]+[f¥4]

fEfBf"fhfE,ðfNf□□[fY,μ,Û,·□D

[GRPH]+[ESC]

ŽŸ,ìfAfvfŠfP□[fVf†f“
fEfBf"fhfE,Û,½,ìfAfCfRf“ (ftf<fXfNfŠ□[f“ fvf□fOf
%of€,ðŠÛ,þ),É□Ø,è‘Ö,!,Û,·□D

[GRPH]+[TAB]

ŽŸ,ìfAfvfŠfP□[fVf†f“
fEfBf"fhfE,É□Ø,è‘Ö,!,□CfAfCfRf“ ,ÅŽÀ□s,μ,Ä,¢
,éfAfvfŠfP□[fVf†f“ ,!•œƎ³,μ,Û,·□D

[GRPH]+fŠf^□[f“fL□[

fEfBf"fhfE,Û,½,ìftf<fXfNfŠ□[f“ ,ÅŽÀ□s,μ,Ä,¢
,é”ñWindowsfAfvfŠfP□[fVf†f“ ŠÔ,ð□Ø,è‘Ö,!,Û,·□D
fRf“fgf□□[f< f□fjf...

•ûƎüfL□[

□[,ì[^U“ @]fRf}f“fh,ð‘l‘ð,μ,½Ǝã,Å□CfEfBf"fhfE,ð
^U“ @ ,μ,Û,·□D,Û,½,ì□CfRf“fgf□□[f< f□fjf...

□[,ì[ftfCfY•ï□X]fRf}f“fh,ð‘l‘ð,μ,½Ǝã,Å□CfEfBf“
fhfE,ìfTfCfY,ð•ï□X,μ,Û,·□D

